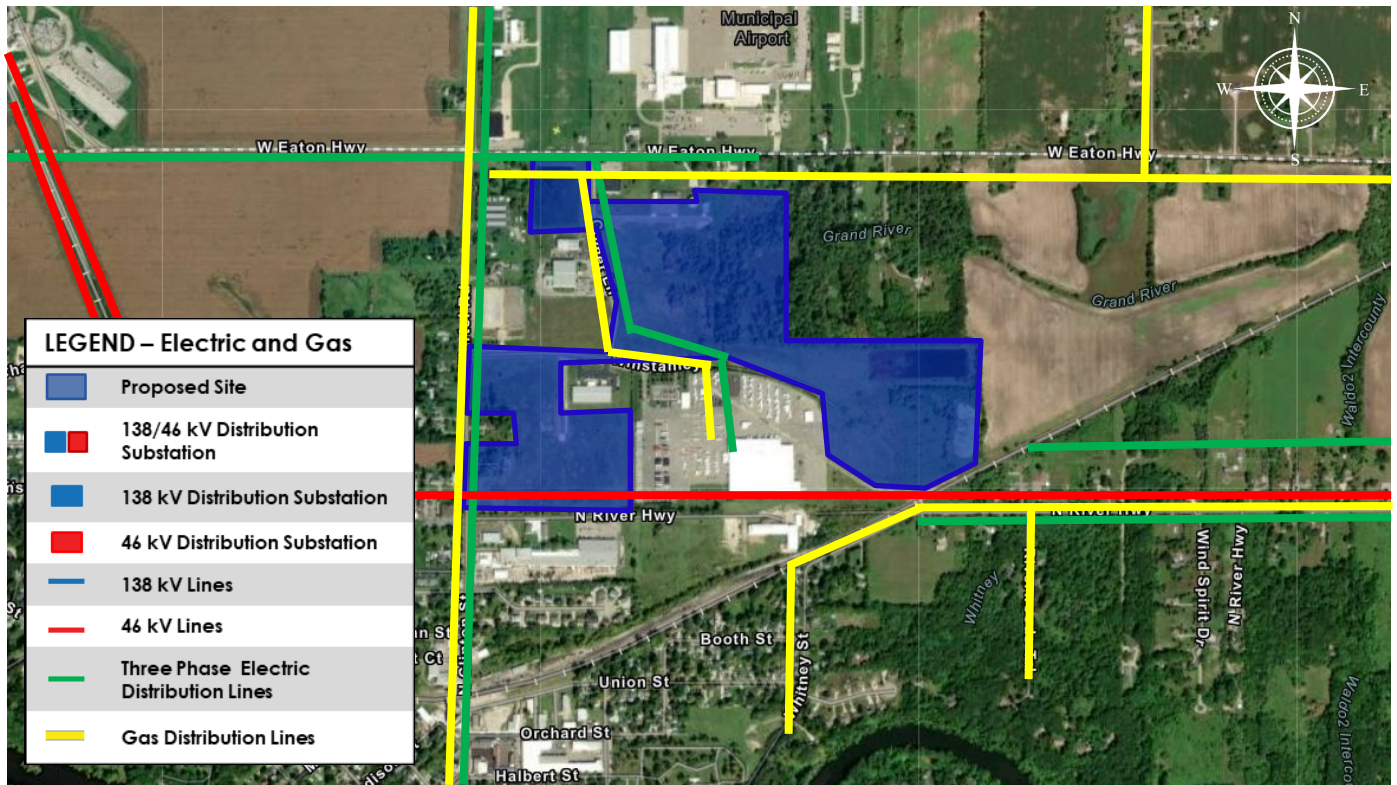


# Eaton County/Grand Ledge Willis Industrial Park



All existing facility locations are approximate and are not to be used for construction purposes. Always contact MISS DIG 811 before you dig.

## Electric Site Benefits

- **Distribution System**
  - Predicted reliability of up to 99.73% for 14.4/24.9 kV system.
  - The distribution system is located onsite.
  - Current available capacity is 3.25 MW. Additional capacity may be available with system upgrades.
- **46 kV System**
  - Predicted reliability of up to 99.99%. The predicted reliability percentage represents the estimated amount of time the facility is in service.
  - The 46 kV system is located adjacent to the site.
  - Facilities will be sized to meet the energy needs of the customer and available system capacity determined at the time of a specific request.
- **138 kV System**
  - Predicted reliability of up to 99.99%. The predicted reliability percentage represents the estimated amount of time the facility is in service.
  - The 138 kV system is located approximately 3.0 miles away.
  - Facilities will be sized to meet the energy needs of the customer and available system capacity determined at the time of a specific request.

## Natural Gas Site Benefits

- **Distribution System**
  - Twelve-inch high-capacity gas main with a maximum allowable operating pressure (MAOP) of 400 psig is currently available along W Eaton Highway.
  - Multiple medium-capacity gas mains with a maximum allowable operating pressure (MAOP) of 60 psig is currently available along W Eaton Highway, Hartel Road and Comet Lane adjacent to site.
  - Delivery pressure will depend on customer needs and hourly load.
  - System improvements may be needed based on hourly load and pressure needs.

## For additional information

Scott Silverthorn, Economic Development Manager | 989-860-1813 | [scott.silverthorn@cmsenergy.com](mailto:scott.silverthorn@cmsenergy.com)