



- City Council
- Calendar
- Parks
- Utilities



THE City Connection

The City Connection highlights recent posts and information shared online, on Facebook, and at City Hall. Help us spread the word by sharing with neighbors, friends, and family!



Jaycee Park Playground

The project broke ground in August and is well underway. Old equipment has been removed, site grading began, and foundation and retaining walls have been poured. [Stay in the loop here!](#)



WWTP & System Improvements

The improvement project broke ground in July. Crews have been quick to make progress on this impactful and imperative project. [Learn more about it here.](#)

PUBLIC NOTICE

Tuesday, September 23, 2025



INVOICE SCAM

Targeting City of Grand Ledge Affiliates

The City of Grand Ledge and the Grand Ledge Police Department have been made aware of recent attempts by scammers to solicit funds with fraudulent "Grand Ledge Planning Commission" invoices.

If you receive an invoice, seemingly from the City, please contact City Hall to verify its legitimacy.

City Hall ☎ 517-627-2149 Monday - Friday 8:00 AM - 5:00 PM

Invoice Scam Targeting City Affiliates

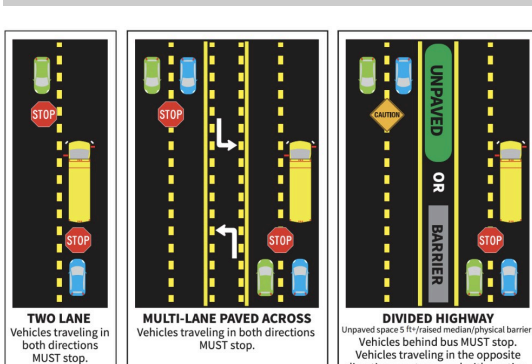
The City of Grand Ledge is alerting all community members and affiliates about a recent scam involving fraudulent invoices being sent under the "Grand Ledge Planning Commission" name. The fraudulent invoices are designed to be official in appearance, using the City's logo and operational information. [LEARN MORE HERE.](#)



Trails Open at Fitzgerald

Just as the fall colors are approaching, all trails at Fitzgerald Park have been reopened to the public! Additionally, the walkway to access the dam and the Grand River has been reopened. Please note that the drive to access the dam area is still closed for vehicle traffic due to the construction of the WWTP.

Back to School



Kids are back to school! This is a great opportunity for everyone to become familiar with the designated safe routes to get students who walk or ride their bikes to and from school. The highlighted routes offer enhanced measures with crossing guards, crosswalks, signs, and curb cuts. Students may find these routes the safest and most direct way to school.

For more information please visit www.cityofgrandledge.com/378/Safe-Routes-to-School.

Updates from City Hall

- [Hydrant Flushing](#) begins Monday, September 29, 2025
- [Learning About Your Water Bill](#)
- Summer Taxes were distributed August 1, 2025, and are due October 1, 2025. [LEARN MORE HERE.](#)
- [City-wide Leaf Collection](#) begins Monday, October 21, 2025
- Changes coming to the [Recycling Center](#) on November 1, 2025



Tentative: Sep. 29 - Oct. 17, 2025 Water Main (Hydrant) Flushing

The Grand Ledge Department of Public Services (DPS) will be flushing City water mains during the hours of 7:30 am - 3:30 pm*. **Weather permitting, this is a tentative schedule.*

WHY ARE WATER MAINS FLUSHED?

Water main flushing is generally completed twice a year to test the hydrants for efficient flow and pressure. Water main flushing also allows the City to remove any sediment from the water lines. This process utilizes 8.4 million gallons, which in turn improves water quality and clarity.



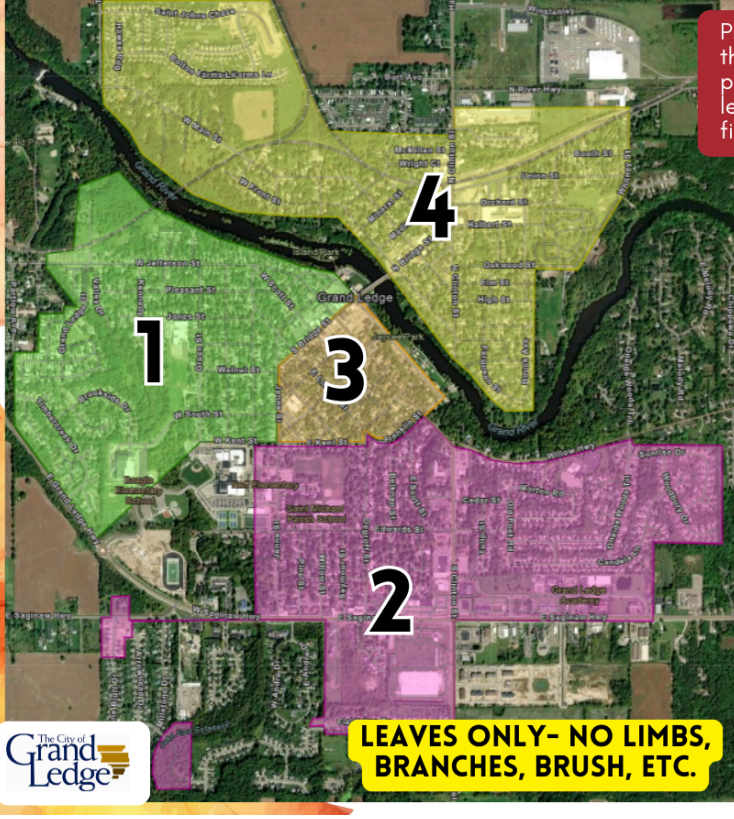
WHAT CAN I EXPECT DURING THIS PERIOD?

During water main flushing, residents may experience temporary changes in water pressure or clarity, while DPS is in your area. Residents are encouraged to postpone laundry between 7:30 am - 3:30 pm during this period. If your laundry becomes stained, do not dry it. Wash it again with clean water and detergent, using a rust removing agent.

Approximate hydrant flushing locations are posted daily at: www.cityofgrandledge.com/360/Hydrant-Flushing

2025 CITY-WIDE LEAF COLLECTION

To help equipment with pickup, leaves should be raked to the grassy area between the sidewalk and piled close to the curb. Please DO NOT push leaves into the street as it is a public safety hazard and impedes storm water runoff.



Pick-up days are coordinated by the zone you live in. When possible, please have your leaves ready by 8:00 am on the first pickup day of each cycle.

- ZONE 1**
10/20 - 10/22
11/3 - 11/5
11/17 - 11/19
- ZONE 2**
10/22 - 10/24
11/5 - 11/7
11/19 - 11/21
- ZONE 3**
10/27 - 10/29
11/10 & 11/12
11/24 - 11/26
- ZONE 4**
10/29 - 10/31
11/13 & 11/14
12/1 - 12/3

Important Updates CITY OF GRAND LEDGE RECYCLING CENTER



EFFECTIVE NOVEMBER 1, 2025

The City of Grand Ledge Recycling Center will be available to City residents only for non-commercial use. A pass will be required for entry and use of the facility.

Why the change?

The Eaton County Board of Commissioners took action to discontinue the Solid Waste Alternatives Grant (SWAG) program on October 1, 2025. The program financially supported the City of Grand Ledge Recycling Center for Eaton County residents. Due to this change, effective November 1, 2025, the center will be available to City residents only, for non-commercial use.

Who is affected?

CITY RESIDENTS
Beginning November 1st an annual pass will be required for recycling center entry. A pass for the remainder of 2025 will be provided to residents at no cost. Proof of City residency is required to obtain a pass.

GETTING YOUR ANNUAL PASS

- Available to pickup at City Hall beginning Monday, October 6, 2025
- Proof of City residency required (ID, Tax or Utility Bill)
- Annual Passes Now Available:
 - 2025 - No Cost
 - 2026 - \$40.00

NON-CITY RESIDENTS & COMMERCIAL USE

Beginning November 1st non-city residents will no longer be able to access the recycling center. There are many options available to non-residents in the Greater Lansing area, including:

RECYCLING OPTIONS

- Many trash service providers in the area provide recycling for a fee. Please check with your provider.
- Granger Wood Road Recycling Center
 - Free Access 24/7
 - 16936 Wood Road
 - Lansing, MI 48906
 - Driveway No. 6

CITY RESIDENTS MUST HAVE AN ANNUAL PASS TO ENTER AND USE THE RECYCLING CENTER.

2025 & 2026 PASSES AVAILABLE

Subject note: Acceptable recyclable materials are subject to change at any time without notice.

City of Grand Ledge residents who have existing trash service from Granger are eligible for curbside recycling at no additional cost.

Customers who do not have existing Granger trash service can receive curbside recycling for an estimated fee of \$15.51/month*.

*Estimated cost from Granger.com, service fees may vary.



BE IN THE KNOW

- Text "GLALERTS" to 67283
- Follow us on Facebook

CITYOFGRANDLEDGE.COM/263 **LEARN MORE!**



SIGN UP FOR ALERTS

Stay informed with City of Grand Ledge emergency communications and other important information with GLAlerts. To receive these alerts, text "GLAlerts" to 67283 and sign up today! For more information, [click here!](#)

[LEARN MORE!](#)

PARKING IN GRAND LEDGE

- [Downtown Resident Parking Passes](#)
- [On-street Parking \(Winter & Summer\)](#)
- [Public Parking Options](#)

CHAMBER & LOCAL EVENTS

