

DATE: \_\_\_\_\_  
 DATE: \_\_\_\_\_  
 DATE: \_\_\_\_\_  
 LAST CORRECTED BY: \_\_\_\_\_  
 LAST CORRECTED BY: \_\_\_\_\_  
 LAST CORRECTED BY: \_\_\_\_\_

ROAD PLANS	SHEET NUMBERS
COVER	1
GRADING PLAN AND CROSS SECTION	2
PLAN AND PROFILE	3
STRUCTURAL DETAILS	4
STAIR DETAILS	5
SESC PLAN	6

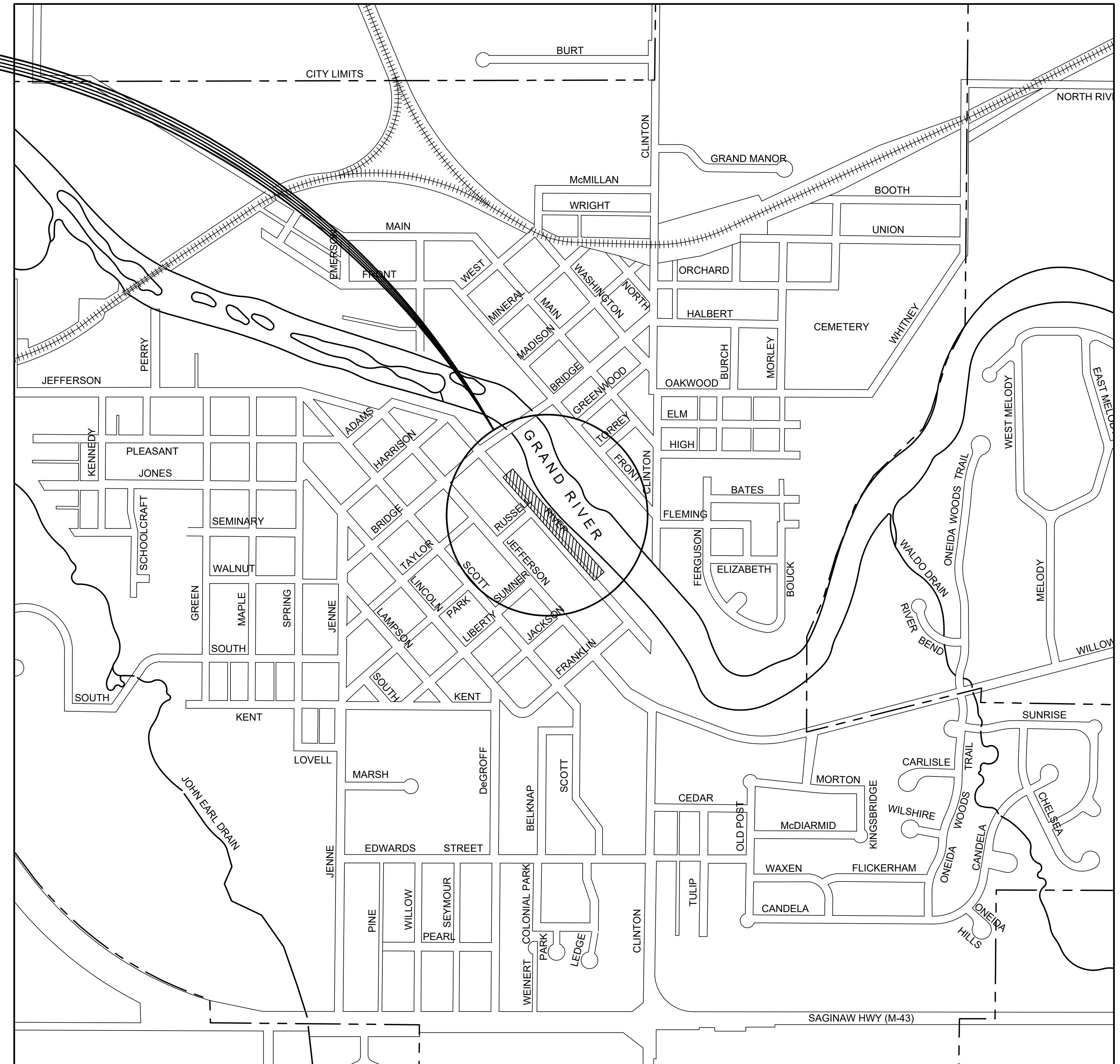
# CITY OF GRAND LEDGE

## PLANS OF PROPOSED JAYCEE PARK

### ADA OBSERVATION PLATFORM

CITY OF GRAND LEDGE  
 EATON COUNTY, MICHIGAN

PROJECT LOCATION



#### REMOVAL LEGEND

REMOVE	(R)
SAVE	(S)
ADJUSTMENT DRAINAGE STRUCTURE	(ADJ)
ADJUSTMENT DRAINAGE STRUCTURE WITH NEW CASTING	(ADJ-B)
RELOCATE	(REL)
RELOCATE BY OTHERS	(REL B/O)
PAVT, REM	(X)
SIDEWALK, REM	(A)
CURB AND GUTTER, REM	(B)
ABANDON	(REC)
BULKHEAD	(REC)
RECONSTRUCT DRAINAGE STRUCTURE	(REC)
PAVING LIMITS	(Hatched)

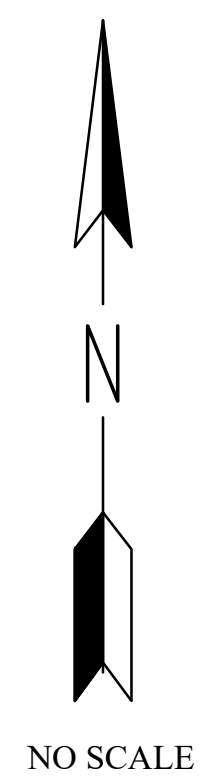
#### LEGEND

UTILITY POLE	(Circle with cross)	EXIST CATCH BASIN	(Square with cross)
GUY ANCHOR	(Triangle)	PROP CATCH BASIN	(Square with dot)
PEDESTAL	(Square)	EXIST MANHOLE	(Circle with dot)
SIGN	(Triangle with dot)	PROP MANHOLE	(Circle with cross)
DECIDUOUS TREE	(Circle with cross)	CULVERT END SECTION	(Circle with cross)
CONIFEROUS TREE	(Star)	GATE VALVE	(Circle with cross)
MAILBOX	(Square with cross)	EXISTING FIRE HYDRANT	(Circle with cross)
SECTION CORNER	(Square with cross)	PROPOSED FIRE HYDRANT	(Circle with cross)
BENCH MARK	(Square with cross)	HMA APPROACH	(Hatched)
		CONCRETE DRIVEWAY AND SIDEWALK	(Hatched)
		100 YEAR FLOODPLAIN	(Dashed line)
		GAS LINE	(Dashed line)
		HANDRAIL	(Dashed line)
		WATER LINE	(Dashed line)
		SANITARY SEWER	(Dashed line)
		STORM SEWER	(Dashed line)
		EXISTING FENCE	(Dashed line)
		PROPOSED FENCE	(Dashed line)
		DITCH LINE	(Dashed line)

THE IMPROVEMENTS COVERED BY THESE PLANS ARE IN ACCORDANCE WITH THE AASHTO, A POLICY ON GEOMETRIC DESIGN OF HIGHWAY AND STREETS, 2011.

THE IMPROVEMENTS COVERED BY THESE PLANS ARE IN ACCORDANCE WITH THE MICHIGAN MANUAL OF UNIFORM TRAFFIC CONTROL DEVICES (MMUTCD) 2011 EDITION.

EXCEPT WHERE OTHERWISE INDICATED ON THE PLANS OR IN THE PROPOSAL AND SUPPLEMENTAL SPECIFICATIONS CONTAINED THEREIN, ALL MATERIALS AND WORKMANSHIP SHALL BE IN ACCORDANCE WITH THE APPLICABLE SECTIONS OF THE MICHIGAN DEPARTMENT OF TRANSPORTATION STANDARD SPECIFICATIONS FOR CONSTRUCTION, 2020 EDITION, AND THE CURRENT SUPPLEMENTAL SPECIFICATIONS (AVAILABLE AT WWW.MDOT.STATE.MI.US/SPECBOOK).



CONTRACT FOR:  
 CONCRETE DECK, CONCRETE SLAB, RETAINING WALL, WING WALLS, DECK SUPPORTS, RAILING, AND SIDEWALK.

THESE PLANS WERE PREPARED FOR THE  
 CITY OF GRAND LEDGE  
 BY

**Eng**™  
 Engineering & Surveying

4063 Grand Oak Drive Suite A109  
 Lansing, MI 48911  
 517.887.1100

16930 Robbins Road Suite 105  
 Grand Haven, MI 49417  
 616.743.7070  
 engdot.com



**ERIK J. MORRIS**  
 ENGINEER  
 No. 6201066586  
 STATE OF MICHIGAN PROFESSIONAL ENGINEER

*Erik J. Morris*  
 ENGINEER-ERIK J. MORRIS, PE

8/25/2025  
 DATE

CITY OF GRAND LEDGE APPROVAL



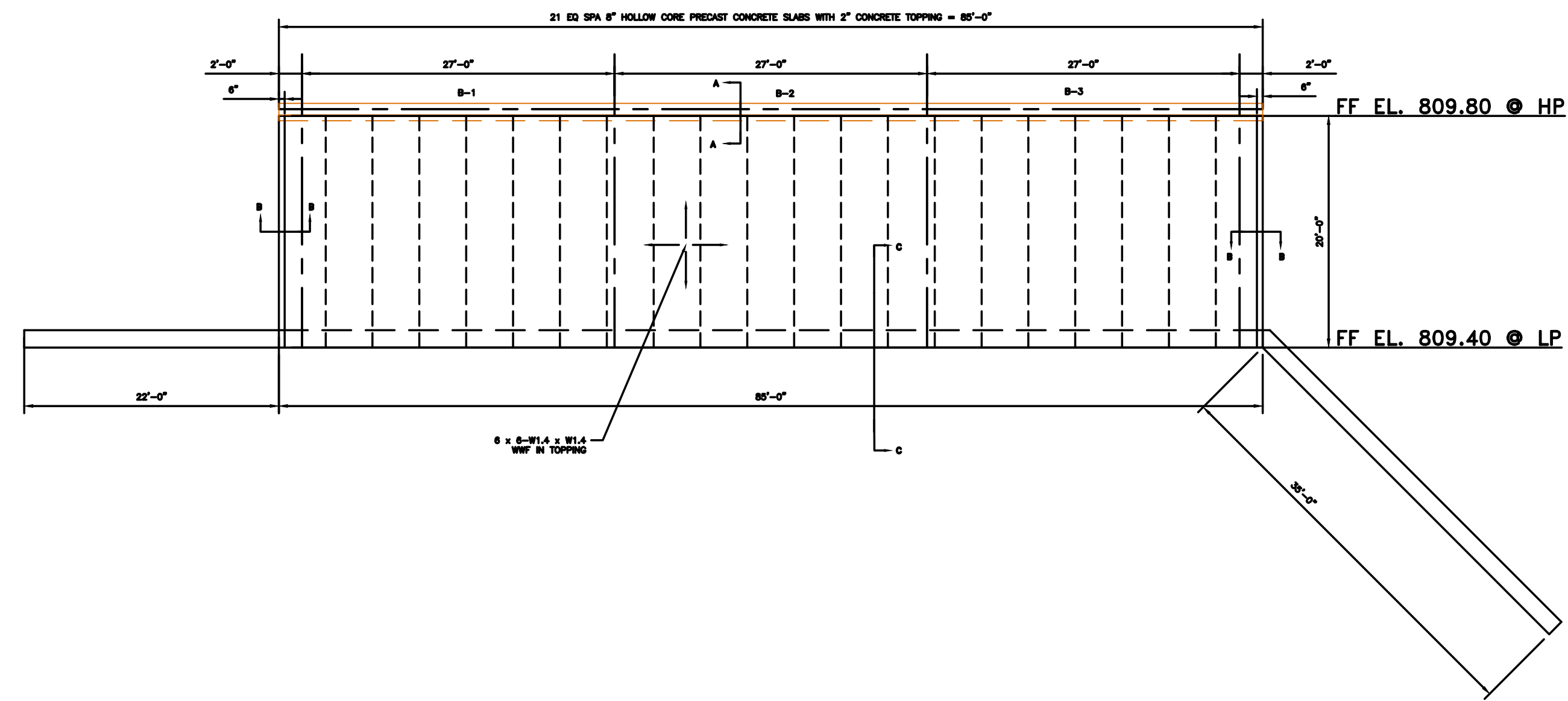
*Adam Smith*  
 ADAM SMITH, CITY MANAGER (313.757.EDT)

08/25/2025  
 DATE

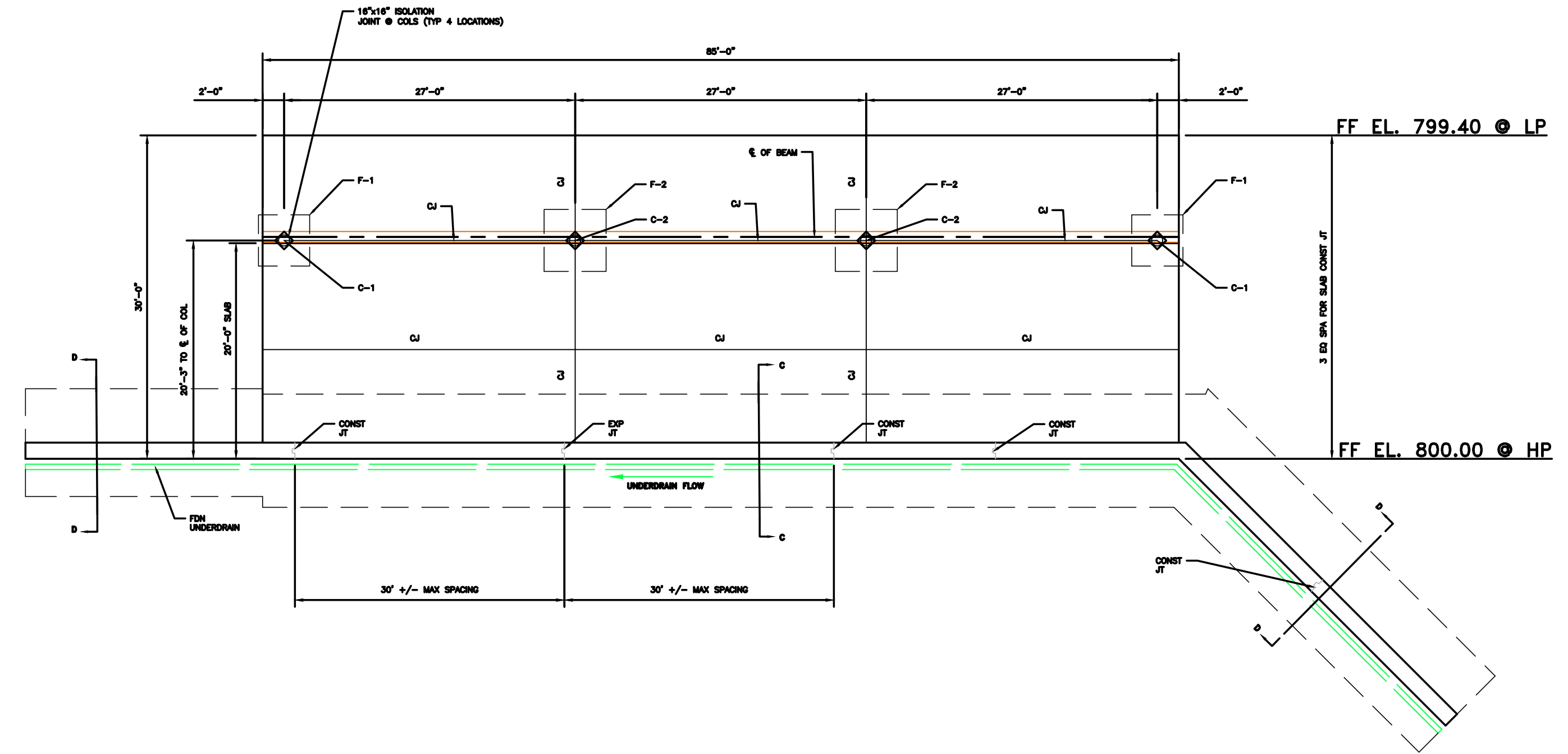
3 WORKING DAYS BEFORE YOU DIG CALL MISS DIG 1-800-482-7171 (TOL FREE)	PROJECT NO. 21039	SHEET NO. 1
---	----------------------	----------------



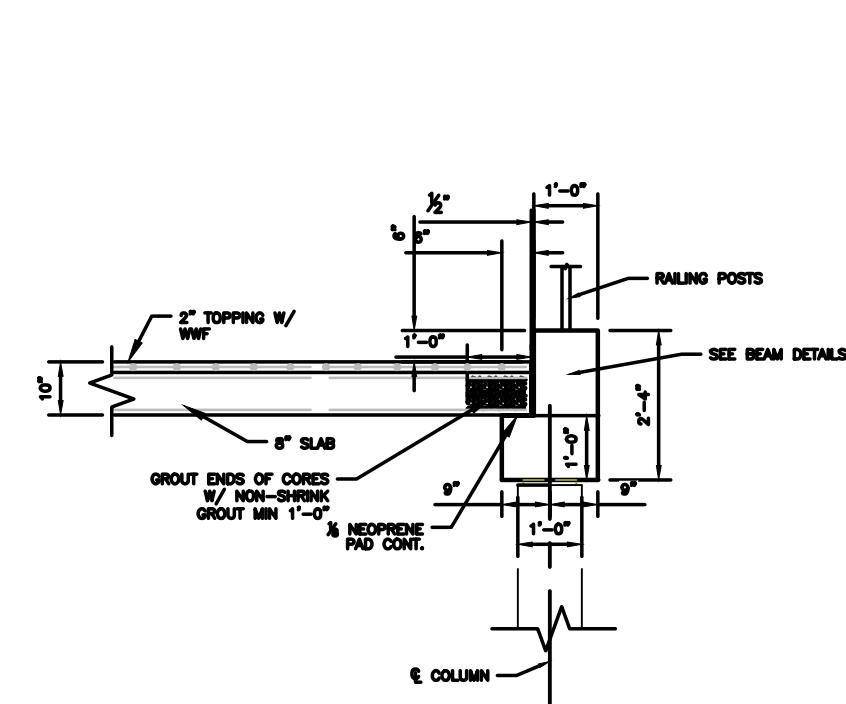




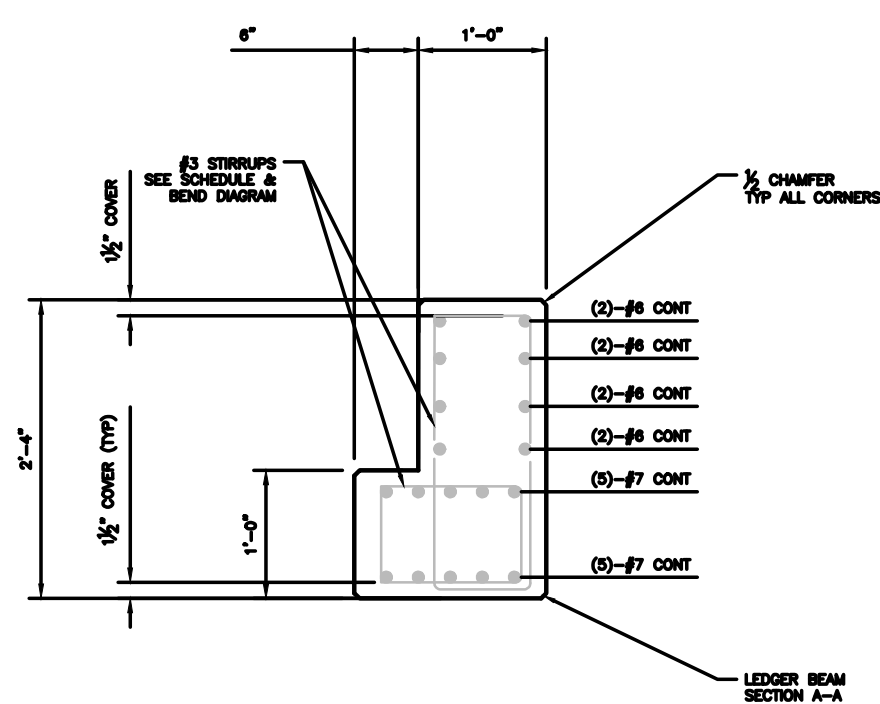
TOP SURFACE PLAN VIEW



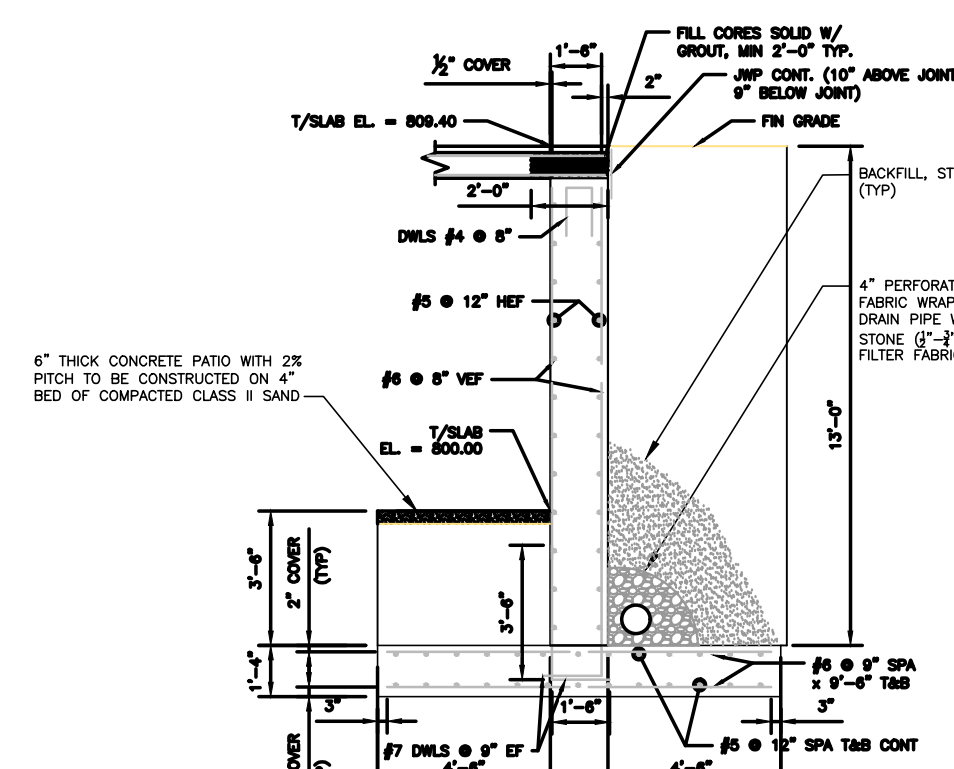
BOTTOM SURFACE PLAN VIEW



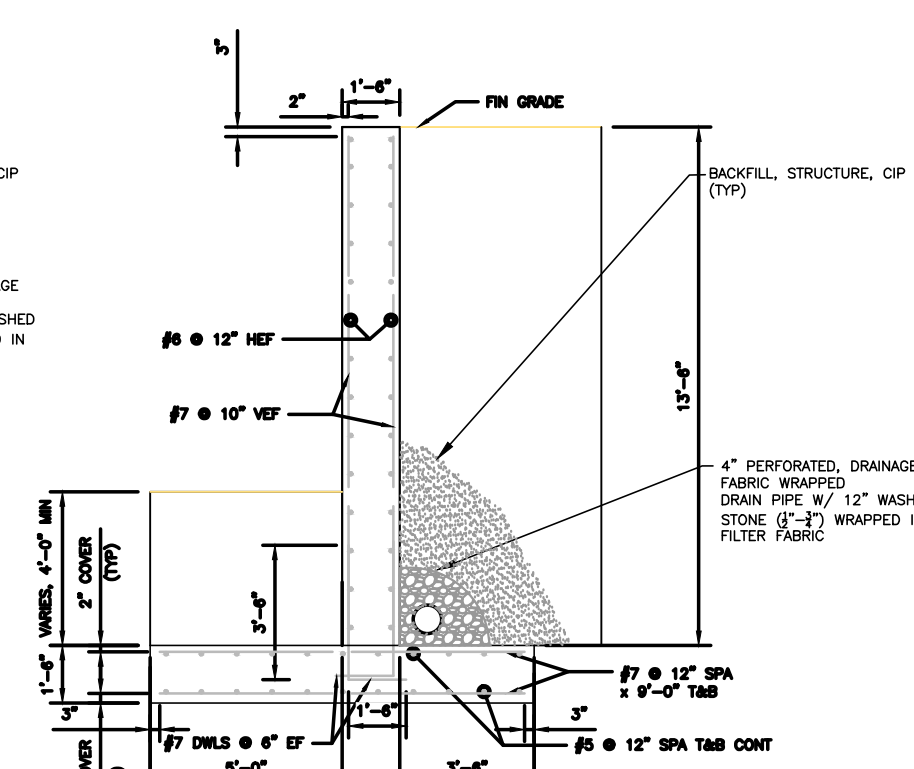
SECTION A-A



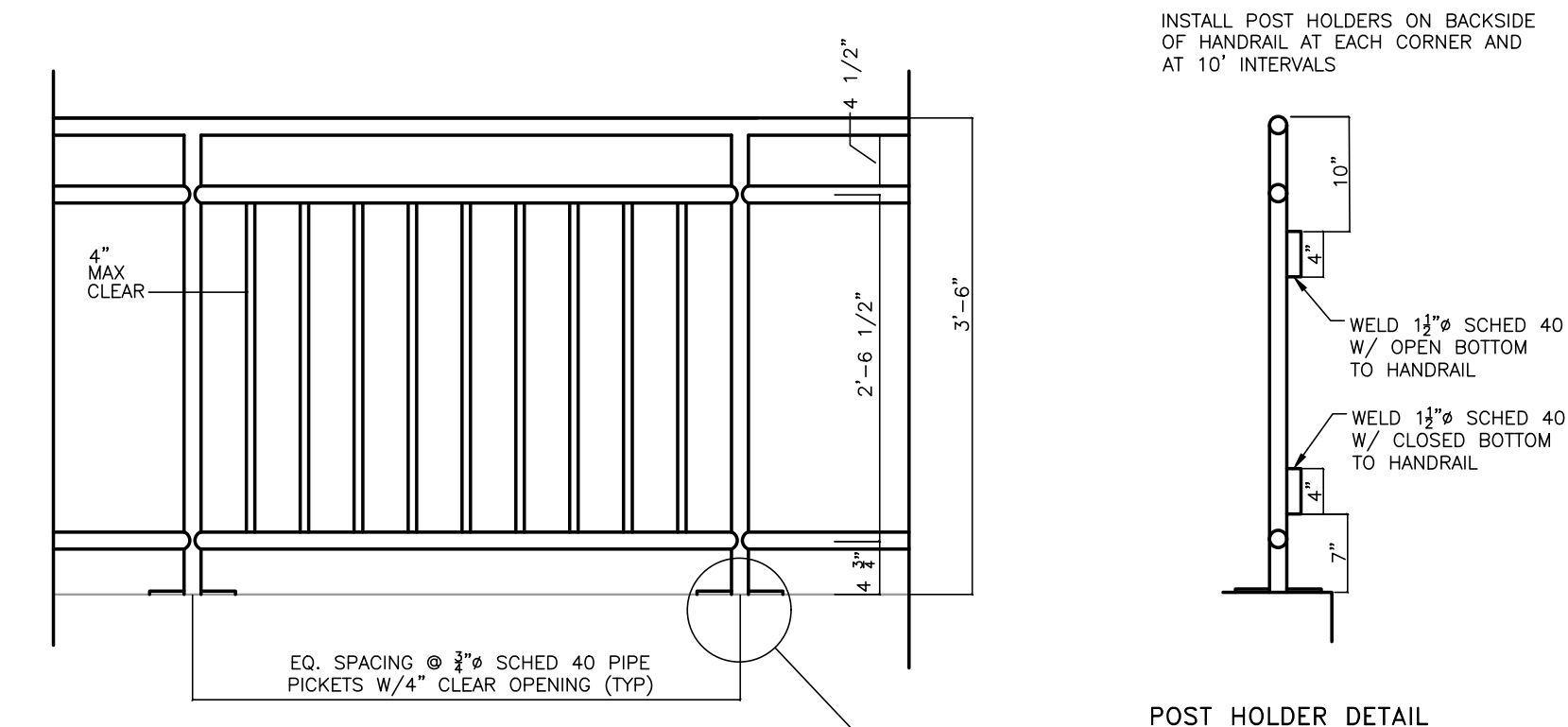
LEDGER BEAM DETAIL



SECTION C-C

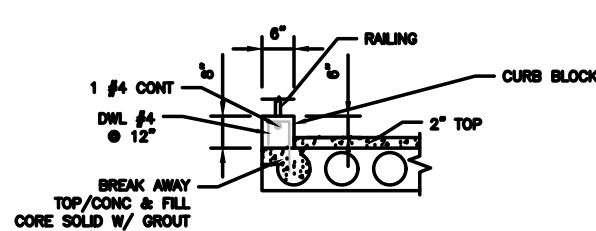


SECTION D-D

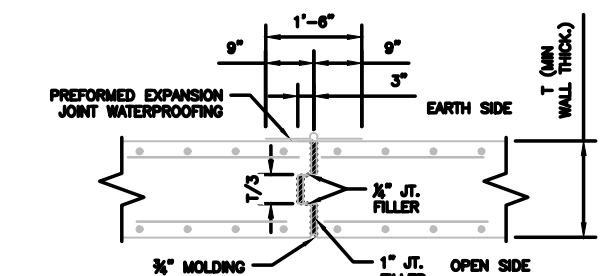


PLATFORM HANDRAIL DETAIL

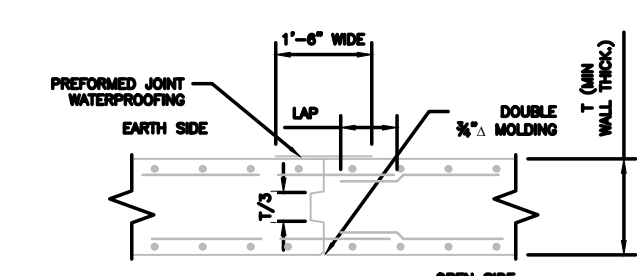
BEAM SCHEDULE					
MARK	SIZE	REINFORCEMENT	LAYOUT	REMARKS	STIRRUP SIZES
B-1	SEE SECTION	2-#6 TOP BENT, 3 ROW @ 2-#6 STRGT, 2 ROW @ 5-#7 STRGT		SEE SECTION	0'-0" x 2'-1" 1'-0" x 0'-9" #3 @ 12" SPA
B-2	SEE SECTION	2-#6 TOP BENT, 3 ROWS @ 2-#6 STRGT, 2 ROWS @ 5-#7 STRGT		SEE SECTION	0'-0" x 2'-1" 1'-0" x 0'-9" #3 @ 12" SPA
B-3	SEE SECTION	2-#6 TOP BENT, 3 ROW @ 2-#6 STRGT, 2 ROW @ 5-#7 STRGT		SEE SECTION	0'-0" x 2'-1" 1'-0" x 0'-9" #3 @ 12" SPA



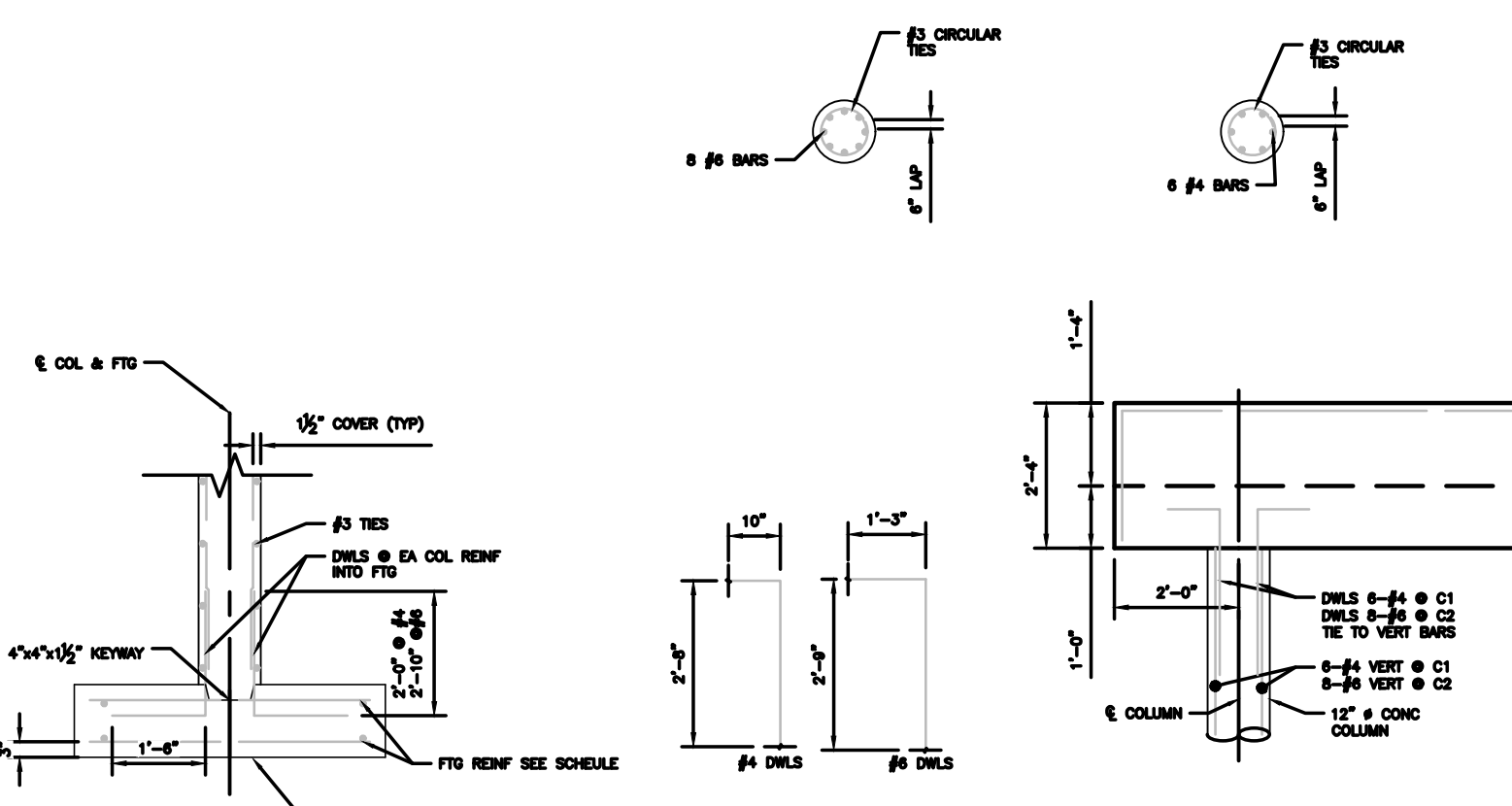
SECTION B-B



WALL EXPANSION JOINT



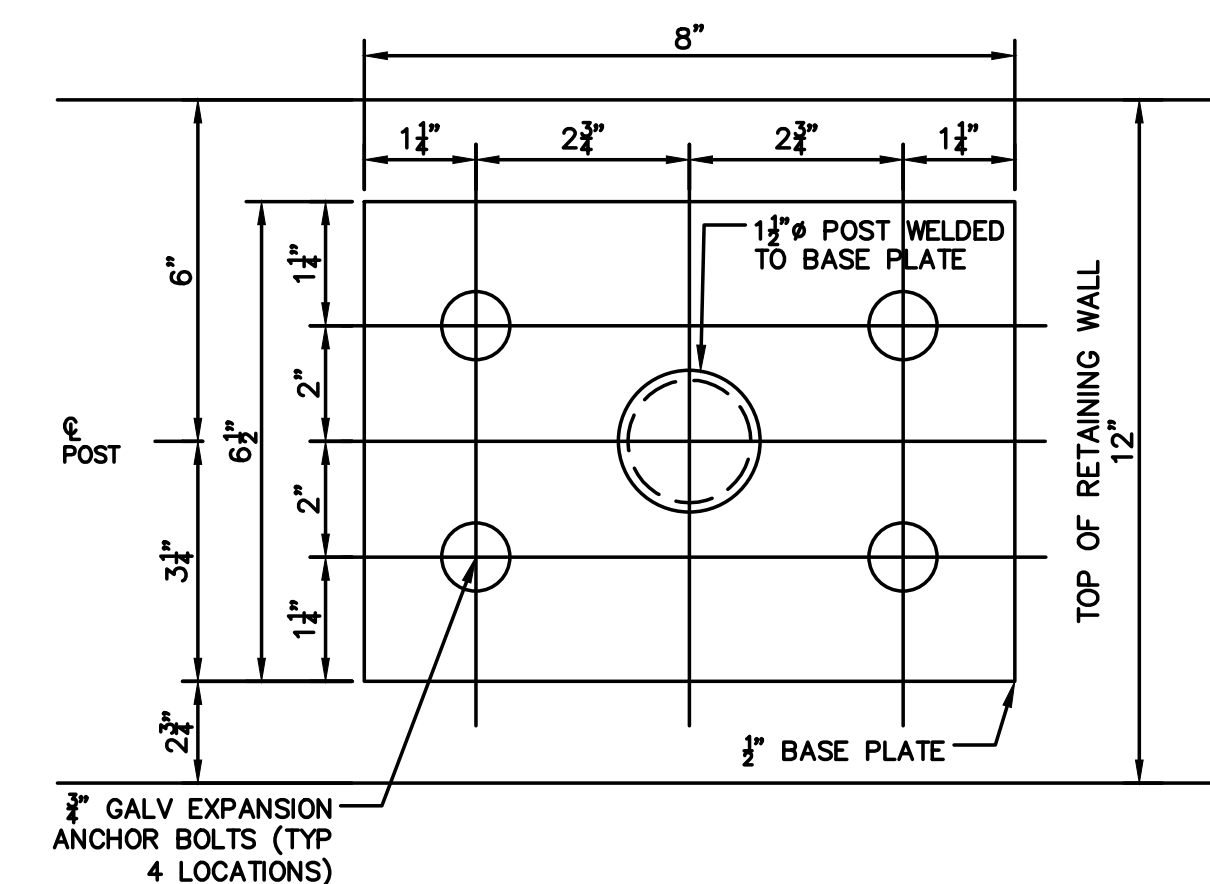
WALL CONSTRUCTION JOINT



COLUMN-FOOTING DETAIL

FOOTING SCHEDULE				COLUMN SCHEDULE			
MARK	SIZE	THICKNESS	REINFORCEMENT	MARK	SIZE	VERT REINF	TIES
F-1	4'-0" X 4'-0"	12"	5-#6 @ 12" TAB @ 6'-0" DIA (SEE DETAIL) #4 (SEE DETAIL)	C-1	12" #	6-#4	#3 @ 12"
F-2	5'-0" X 5'-0"	14"	6-#6 @ 12" TAB @ 6'-0" DIA (SEE DETAIL) #4 (SEE DETAIL)	C-2	12" #	6-#6	#3 @ 12"

(ALL REINF WILL BE EPOXY COATED)



POST AND BASE PLATE CONNECTION PLAN  
FOR USE ON PLATFORM HANDRAIL

STRUCTURAL DETAILS

NO.	REVISIONS	DATE	BY	DATE	BY



4063 Grand Oak Drive Suite A109  
Lansing, MI 48911  
517.687.1100

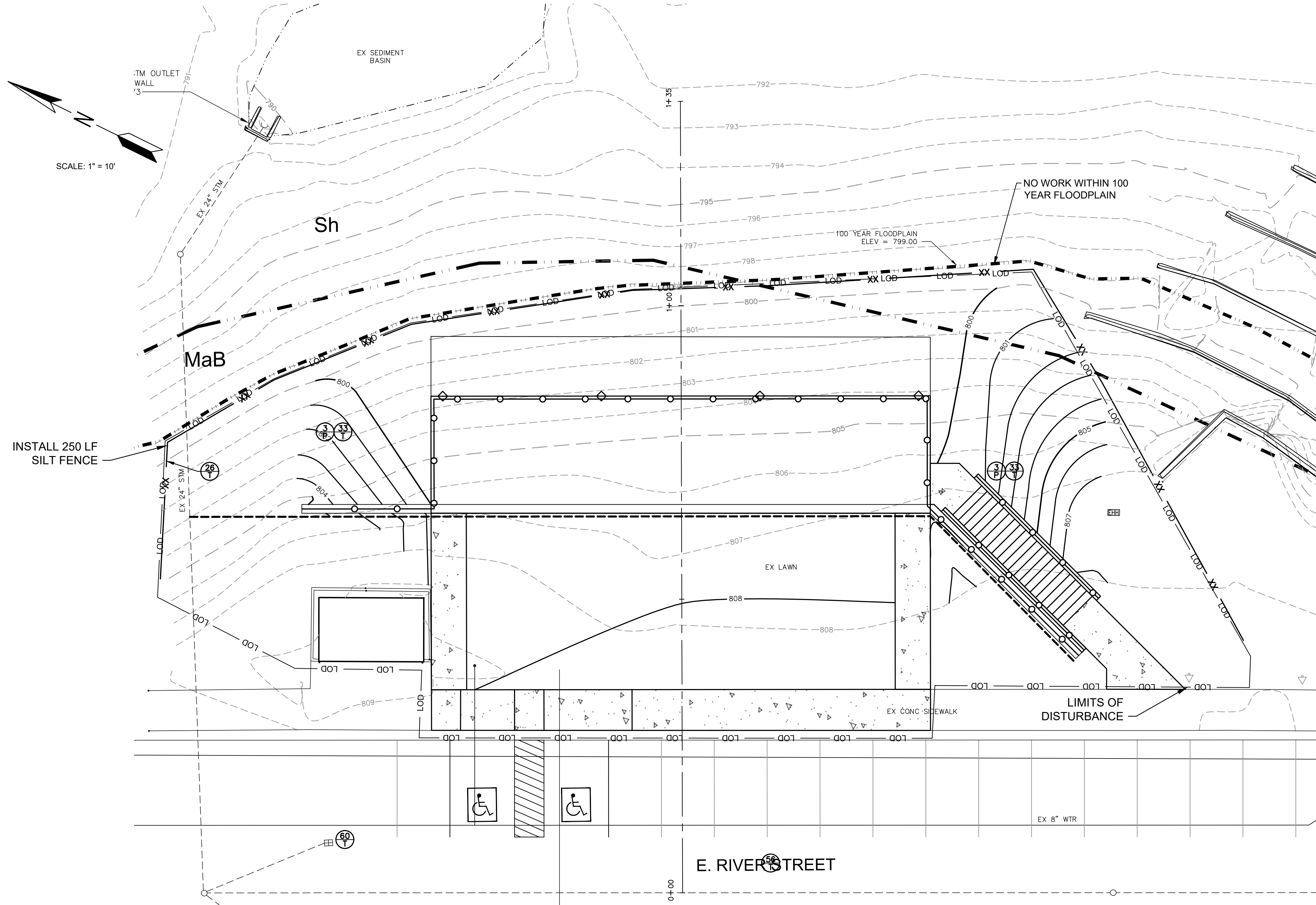


CITY OF GRAND LEDGE  
JAYCEE PARK  
ADA OBSERVATION PLATFORM  
JAYCEE PARK, GRAND LEDGE, EATON COUNTY, MICHIGAN

PROJECT NO.  
**21039**  
SHEET NO.  
**4 OF 6**

T:\Autocad Drawings\21039\21039\_Plan.dwg, 2/28/2024, 8:31:50 AM, DWG To PDF.pc3





BM #1 ELEV = 810.02  
RR SPIKE NE SIDE UTILITY POLE SW  
SIDE RIVER ST N SIDE BOARDWALK  
APARTMENTS  
BM #2 ELEV = 794.11  
CHISELED X NW OF NW BBALL HOOP IN  
CONCRETE P. 208/29

**811** Know what's below.  
Call before you dig.

THE LOCATIONS OF EXISTING UNDERGROUND UTILITIES ARE SHOWN IN AN APPROXIMATE WAY ONLY AND HAVE NOT BEEN INDEPENDENTLY VERIFIED BY THE OWNER OR ITS REPRESENTATIVE. THE CONTRACTOR SHALL DETERMINE THE EXACT LOCATION OF ALL EXISTING UTILITIES BEFORE COMMENCING WORK, AND AGREES TO BE FULLY RESPONSIBLE FOR ANY AND ALL DAMAGES WHICH MIGHT BE OCCASIONED BY THE CONTRACTOR'S FAILURE TO EXACTLY LOCATE AND PRESERVE ANY AND ALL UNDERGROUND UTILITIES.

**SESC NOTES**

- GENERAL MAINTENANCE**  
1. TEMPORARY SESC MEASURES TO BE MAINTAINED BY THE CONTRACTOR AT ALL TIMES.
- SEEDING AND MULCHING**  
1. SEEDING PRACTICES INCLUDE TOPSOIL (AS REQUIRED), AND MULCH OR MULCH BLANKET (AS DIRECTED BY ENGINEER OR REQUIRED ON PLANS).  
2. WHERE NECESSARY, APPROPRIATE MULCH BLANKET MUST BE APPLIED BASED ON SLOPE AND GROWING CONDITIONS AS APPROVED BY THE ENGINEER.  
3. ALL SLOPES AND HIGHLY ERODIBLE AREAS WILL BE TEMPORARILY SEEDED AND MULCHED WHEN CONSTRUCTION ACTIVITY IS NOT TAKING PLACE.  
4. SEED AND MULCH IS TO BE INSPECTED FOLLOWING EACH RAIN EVENT TO DETERMINE IF CONCENTRATED FLOWS ARE PRESENT.  
5. IN THE EVENT THAT SEED AND MULCH ARE REMOVED BY ERODIBLE RUNOFF, REPAIRS ARE TO BE MADE IMMEDIATELY.  
6. SITE WILL BE PERMANENTLY STABILIZED WITHIN 5 DAYS OF FINAL GRADE.
- STORM DRAIN INLET PROTECTION**  
1. STORM DRAIN INLETS TO BE INSPECTED WEEKLY AND AFTER EACH RAIN EVENT.  
2. EMPTY SEDIMENT AND KEEP INLET PROTECTION CLEAN DURING INSPECTION AND MAINTENANCE OPERATIONS.
- COMPLIANCE WITH PART 91 OF PA 451**  
1. RESPOND IMMEDIATELY TO STORMWATER OPERATOR AND/OR SOIL EROSION AND SEDIMENTATION CONTROL INSPECTOR CONCERNS. MAKE CORRECTIVE MEASURES AS REQUIRED.
- CONTINUED MAINTENANCE PLAN**  
1. STORMWATER OPERATOR/PA OWNER OR MAINTENANCE SUPERVISOR WILL INSPECT MONTHLY THROUGH THE FIRST GROWING SEASON. NON ESTABLISHED VEGETATION WILL BE REPAIRED/RESEED AS NECESSARY.

**CONSTRUCTION & SOIL EROSION AND SEDIMENTATION CONTROL NOTES:**

- ALL TEMPORARY SOIL EROSION AND SEDIMENTATION CONTROL MEASURES SHALL BE IN PLACE BEFORE CONSTRUCTION BEGINS. THE CONTRACTOR IS RESPONSIBLE FOR INSPECTING ALL MEASURES AT LEAST ONCE EACH WEEK AND/OR WITHIN 24 HOURS OF A PRECIPITATION EVENT THAT RESULTS IN STORM WATER RUNOFF OR DISCHARGE.
- SURFACE RESTORATION OF ALL SEWER TRENCHES IN LAWN AREAS SHALL BE TOP SOILED, SEEDED, AND MULCHED WITHIN 5 CALENDAR DAYS OF BACKFILLING THE TRENCH.
- THE CONTRACTOR SHALL BE RESPONSIBLE FOR DUST CONTROL AND SHALL PROVIDE ALL EQUIPMENT AND MATERIAL NECESSARY TO KEEP DUST IN CHECK AT ALL TIMES. THE CONTRACTOR SHALL RESPOND IMMEDIATELY TO ANY AND ALL COMPLAINTS. STREETS, PARKING LOTS, DRIVEWAYS, PAVED ACCESS ROADS, AND ALL OTHER PAVED SURFACES SHALL BE SWEEPED AT LEAST ONCE A DAY AND/OR AS NEEDED THROUGHOUT THE DAY.
- MULCH AND/OR MULCH BLANKET SHALL BE APPLIED AND ANCHORED APPROPRIATELY ON ALL SLOPES 3:1 OR GREATER ON ALL SLOPES DEEMED NECESSARY TO PREVENT OR CORRECT EROSION PROBLEMS AND ON ALL DISTURBED AREA DUE TO CONSTRUCTION.
- ALL TEMPORARY SOIL EROSION MEASURES SHALL BE REMOVED AFTER PERMANENT MEASURES HAVE BEEN ESTABLISHED.
- ALL CONSTRUCTION SHALL BE CONFINED TO AREAS OF DISTURBANCE WITHIN THE ROAD RIGHT OF WAY AND/OR WITHIN STORM SEWER EASEMENTS. NO WORK, MATERIAL, OR STOCKPILES WILL BE ALLOWED OUTSIDE OF THESE LIMITS.
- ALL TRENCHES SHALL BE BACKFILLED TO GRADE OR PROPERLY PROTECTED IN ACCORDANCE WITH PROJECT PLANS & SPECIFICATIONS AT THE END OF EVERY DAY. AT NO TIME SHALL A TRENCH BE LEFT OPEN FOR A PERIOD LONGER THAN 48 HOURS.
- PROTECT ALL TREES AND VEGETATION NOT SCHEDULED TO BE REMOVED. ENGINEER APPROVAL IS REQUIRED FOR ANY UNSCHEDULED REMOVAL OF TREES, SHRUBS OR LANDSCAPING.
- EROSION AND SEDIMENTATION FROM WORK ON THIS PROJECT SHALL BE CONTAINED WITHIN THE WORK AREA AND NOT ALLOWED TO COLLECT ON OFF-SITE AREAS OR IN WATERWAYS - WATERWAYS INCLUDE BOTH NATURAL AND MAN-MADE OPEN DITCHES, STREAMS, STORM DRAINS, LAKES AND PONDS.
- INLET FILTER MAINTENANCE SHALL INCLUDE THE REMOVAL OF ANY ACCUMULATED SILT OR OTHER DEBRIS. IF INLET FILTERS CANNOT BE CLEANED, OR ARE DAMAGED, THEN THE FILTER AND/OR STONE SHALL BE REPLACED.

SESC - CONSTRUCTION SEQUENCE	WEEK 1	WEEK 2	WEEK 3	WEEK 4	WEEK 5
INSTALL TEMPORARY SESC MEASURES:					
A. SILT FENCE	█				
B. INLET PROTECTION	█				
REMOVE EXISTING SIDEWALK	█				
RETAINING WALL CONSTRUCTION		█			
LOWER CONCRETE PAD AND COLUMN CONSTRUCTION			█		
UPPER CONCRETE PAD AND RAILING INSTALLATION				█	
FINAL SITE GRADING				█	
FINAL SITE STABILIZATION (TO BE COMPLETED WITHIN 24 HOURS OF FINAL GRADING OR ACTIVITY WITHIN THAT AREA)					█
REMOVE TEMPORARY SESC MEASURES					█

**SOIL EROSION AND SEDIMENTATION CONTROL MEASURES**

XX TEMPORARY MEASURE    
 YY PERMANENT MEASURE

TOTAL LIMITS OF DISTURBANCE: 0.26 ACRES

SOIL TYPES AND ABBREVIATIONS	
MaB	Marlette loam, 2 to 6 percent slopes
Sh	Shoals-Sloan loams

**SOIL EROSION AND SEDIMENTATION CONTROL MEASURES**

3	SEEDING	When bare soil is exposed, temporarily or permanently, to erosive forces from wind and/or water on flat areas, mild slopes, grassed waterways and spillways, diversion ditches and dikes, borrow and stockpile areas, and spoil piles.
26	SILT FENCE	A permeable barrier erected below disturbed areas to capture sediment from sheet flow. Can be used to divert small volumes of water to stable outlets. Ineffective as a filter and should never be placed across streams or ditches where water flows.
33	MULCH BLANKETS	Mulch blankets provide an immediate and effective cover over raw erodible slopes affording excellent protection against rain and wind erosion.
56	STREET SWEEPING	Remove sediment from pavement minimizing non-point source pollution.
60	STORM DRAIN INLET PROTECTION	Around the entrance to a newly constructed catch basin or an inlet that will capture runoff from an earth change activity.

Drawn By: CAH  
 Date: 01/18/22  
 Approved By: [Signature]  
 Date: [Blank]

REVISIONS  
 NO. [Blank] BY [Blank] DATE [Blank]

4063 Grand Oak Drive Suite A109  
 Lansing, MI 48911  
 517.867.1100

16930 Robbins Road Suite 105  
 Grand Haven, MI 49417  
 616.743.7070  
 engdol.com

**Eng**<sup>TM</sup>  
 Engineering & Surveying

CITY OF GRAND LEDGE  
 JAYCEE PARK  
 ADA OBSERVATION PLATFORM  
 JAYCEE PARK, GRAND LEDGE, EATON COUNTY, MICHIGAN

PROJECT NO.  
**21039**

SHEET NO.  
**6 OF 6**

**SOIL EROSION & SEDIMENTATION CONTROL PLAN**






# 2024-02-28\_Jaycee Park - Full Set - Sealed

Final Audit Report

2025-08-25

Created:	2025-08-25
By:	Gregory Newman (gnewman@cityofgrandledge.com)
Status:	Signed
Transaction ID:	CBJCHBCAABAAqZ5TMGciYU2t1yh2NMoqoWBS4ucg_4Cn

## "2024-02-28\_Jaycee Park - Full Set - Sealed" History

-  Document created by Gregory Newman (gnewman@cityofgrandledge.com)  
2025-08-25 - 8:11:16 PM GMT
-  Document emailed to Adam Smith (asmith@cityofgrandledge.com) for signature  
2025-08-25 - 8:11:35 PM GMT
-  Email viewed by Adam Smith (asmith@cityofgrandledge.com)  
2025-08-25 - 9:37:38 PM GMT
-  Document e-signed by Adam Smith (asmith@cityofgrandledge.com)  
Signature Date: 2025-08-25 - 9:37:57 PM GMT - Time Source: server
-  Agreement completed.  
2025-08-25 - 9:37:57 PM GMT