

ADDENDUM NO. 2

**FOR
CITY OF GRAND LEDGE, Eaton County, Michigan, for RIVER STREET SANITARY
SEWER RELOCATION**

ORIGINAL BID DATE: Tuesday, January 16, 2024 at 10:00 A.M.

REVISED BID DATE: Thursday, January 25, 2024 at 10:00 AM

The following Addendum is provided to revise the **CONTRACT DOCUMENTS.**

REVISIONS: The Plans have been revised to reflect the addition of two (2) new manholes and an additional 24 feet of 18-inch sanitary sewer. Please refer to the attached plans and based bids in accordance with the revised plans included herein.

REVISIONS: Please use the attached Bid Proposal (Revised) when submitting your bid.

All other portions of the specifications remain in effect and are not modified by the revisions noted herein.

Addendum No. 2 Prepared By:

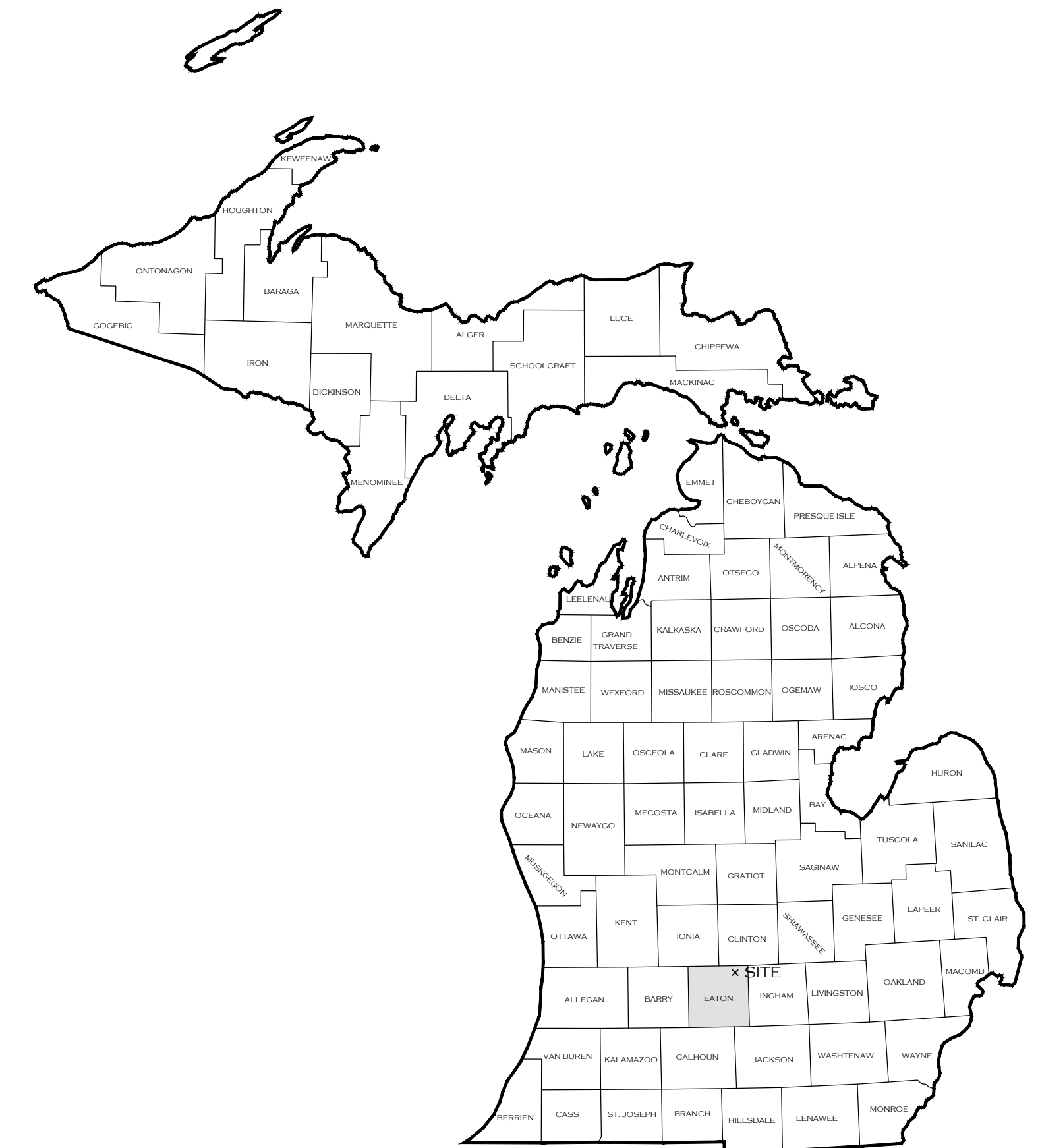
Wolverine Engineers & Surveyors, Inc.

RIVER STREET SANITARY SEWER

SECTION 11, CITY OF GRAND LEDGE EATON COUNTY, MICHIGAN



LOCATION MAP
NOT TO SCALE



OWNER CONTACT INFORMATION
CITY OF GRAND LEDGE
CONTACT: DAVID GUCHESS
310 GREENWOOD ST
PROJECT ADDRESS CITY, MI 48837
PH: 517-627-2149
EMAIL: DGUTCHESS@CITYOFGRANDLEDGE.COM

WOLVERINE
Engineers & Surveyors, Inc.
312 North Street
Mason, Michigan 48854
Ph: 517-676-9200
Fx: 517-676-9396
<http://www.wolveng.com>

Sheet Index

SHEET NUMBER	SHEET TITLE
C0.0	COVER
C1.0	GENERAL NOTES & LEGENDS
C2.0	EXISTING TOPOGRAPHY
C3.0	EXISTING SEWER PLAN & PROFILE
C4.0	PROPOSED SEWER PLAN & PROFILE
C5.0	STANDARD DETAILS
C6.0	SESC PLAN

WOLVERINE
Engineers & Surveyors, Inc.
312 North Street
Mason, Michigan 48854
Ph: 517-676-9200
Fx: 517-676-9396
<http://www.wolveng.com>

ABBREVIATIONS	
AB	AS-BUILT
BIT	BITUMINOUS
BLK	BULK HEAD
BM	BENCH MARK
BOC	BACK OF CURB
CB	CATCH BASIN
CI	CAST IRON
CIP	CAST IN PLACE
CL	CENTER LINE
CON	CONDUIT
CONC	CONCRETE
DI	DUCTILE IRON
DIA	DIAMETER
EGL	EXISTING GROUND LEVEL
EL	ELEVATION
EOP	EDGE OF PAVEMENT
EX	EXISTING
FF	FINISHED FLOOR
FOC	FACE ON CURB
HA	HYDRANT ASSEMBLY
HMA	HOT MIX ASPHALT
HYD	HYDRANT
LT	LEFT
O:	OFFSET
MH	MANHOLE
PAV	PAVEMENT
PR	PROPOSED
PSF	POUNDS PER SQUARE FOOT
PSI	POUNDS PER SQUARE INCH
PVC	POLYVINYL CHLORIDE
FM	FORCE MAIN
REC	RECORD
REL	RELOCATE
REM	REMOVE
RT	RIGHT
S:	STATION
SAN	SANITARY
STM	STORM
TOC	TOP OF CONCRETE
TOP	TOP OF PIPE OR TOP OF PAVEMENT
TOW	TOP OF WALL OR TOP OF WALK
WTR	WATER MAIN
TOPO	TOPOGRAPHIC SURVEY

EXISTING LEGEND	
	CONTOUR - MJR
	CONTOUR - MNR
	SANITARY SEWER
	STORM SEWER
	WATER MAIN
	GAS MAIN
	OVERHEAD UTILITY
	COMMUNICATION LINE
	CHAIN LINK FENCE
	WOOD FENCE
	VINYL FENCE
	CURB
	ROW
	PARCEL LINE
	GOVERNMENT LINE
	CENTERLINE
	TREE LINE
	STRUCTURE
	ASPHALT
	CONCRETE
	GRAVEL
	STONE
	DECIDUOUS TREE
	EVERGREEN TREE
	SHRUB
	STUMP
	SANITARY MANHOLE
	SANITARY CLEAN OUT
	SANITARY TRACE BOX
	STORM MANHOLE
	STORM CLEAN OUT
	STORM CATCH BASIN-CURB
	STORM CATCH BASIN-YARD
	STORM END SECTION
	STORM TRACE BOX
	HYDRANT
	WATER SERVICE VALVE
	WATER ISOLATION VALVE
	WATER MANHOLE
	WATER METER PIT
	WATER TRACE BOX
	LIGHT POLE
	UTILITY POLE
	GUY POLE
	GUY WIRE
	TELEPHONE RISER
	TELEPHONE MANHOLE
	GAS VALVE
	MAILBOX
	POST
	STREET SIGN
	SECTION CORNER
	FOUND PROPERTY IRON
	MONUMENT BOX
	SET PROPERTY IRON
	BENCHMARK
	SATELLITE DISH

REMOVALS LEGEND	
	SAW CUT, INTERMEDIATE
	CURB AND GUTTER, REM
	PAVT, REM ASPHALT
	PAVT, REM CONCRETE
	REMOVAL
	SAVE
	SAWCUT
	RELOCATE
	RELOCATE BY OTHERS
	PROTECT
	SILT FENCE
	EROSION CONTROL ITEM NUMBER (SEE STANDARD PLAN R-96 SERIES)
	SLOPE STAKE LINE

PROPOSED LEGEND	
	SANITARY SEWER
	STORM SEWER
	WATER MAIN
	SANITARY MANHOLE
	SANITARY TRACE BOX
	STORM MANHOLE
	STORM CATCH BASIN CURB/YARD
	STORM OUTLET STRUCTURE
	STORM TRACE BOX
	STORM SEWER END SECTION
	STORM OR SANITARY CLEANOUT
	FIRE HYDRANT
	ISOLATION VALVE
	WATER SERVICE VALVE
	METER PIT
	WATER TRACE BOX
	ASPHALT
	CONCRETE
	CURB AND GUTTER
	CONTOUR - MJR
	CONTOUR - MNR
	WORKOUT STATION
	LIGHT POLE

SURVEY NOTES:	
COORDINATE SYSTEM:	STATE PLANE GRID
ZONE:	MICHIGAN SOUTH 2113
ELLIPSOID:	GRS 80
HORIZONTAL DATUM:	NAD 83 (MSRN CORS96)
VERTICAL DATUM:	NAVD 88
GEOID:	GEIOD 12B
UNITS:	INTERNATIONAL FEET

BENCHMARKS:	
#1	GEAR SHAFT, EAST SIDE OF UTILITY POLE, S CORNER OF INTERSECTION OF HARRISON AND RIVER ST ELEVATION=814.24
#2	NAIL AND TAG IN UTILITY POLE LACTED 15'± NORTH OF NORTHEAST CORNER OF NAIL AND HAIR COMMERCIAL BUSINESS ELEVATION=810.39

GENERAL PLAN NOTES:

EXISTING WATER MAINS, SANITARY SEWERS, STORM SEWERS, COMBINED SEWERS, ETC.:

THE CONTRACTOR WILL BE RESPONSIBLE FOR ANY DAMAGE TO THE EXISTING UTILITIES DURING ALL CONSTRUCTION ACTIVITIES. INSPECT ALL EXISTING SEWER PIPES ENCOUNTERED DURING CONSTRUCTION AND CONNECT TO APPROPRIATE SEWER AS DIRECTED BY THE ENGINEER.

MIOSHA:

PERFORM ALL WORK UNDER THIS CONTRACT IN ACCORDANCE WITH ALL APPLICABLE PROVISIONS, POLICIES, RULES, AND STANDARDS OF THE MICHIGAN OCCUPATIONAL SAFETY AND HEALTH ACT (MIOSHA).

DUST CONTROL:

PROVIDE DUST CONTROL AS DIRECTED BY THE ENGINEER.

TREE PROTECTION:

DO NOT CUT ROOTS OR LIMBS OF ANY TREES WITHIN THE PROJECT LIMITS NOT BEING REMOVED UNLESS APPROVED BY THE MUNICIPALITY'S ARBORIST. PROVIDE MUNICIPALITY WITH 72 HOURS WRITTEN NOTICE TO COORDINATE WITH ARBORIST. PROCEED WITH WORK AFTER 72 HOURS IF ARBORIST IS UNRESPONSIVE.

EXISTING UTILITY CONFLICTS:

RELOCATE EXISTING BURIED UTILITY LINES THAT CONFLICT WITH NEW CONSTRUCTION. COORDINATE WITH ENGINEER AND SERVICE PROVIDER. PAYMENT FOR RELOCATING EXISTING UTILITY LINES IS INCLUDED IN RELATED ITEMS OF WORK.

UNDERGROUND UTILITY ACCURACY:

THE UNDERGROUND UTILITIES SHOWN HAVE BEEN LOCATED FROM FIELD SURVEY INFORMATION AND FROM UTILITY COMPANY INFORMATION. THE ENGINEER MAKES NO GUARANTEES THAT THE UNDERGROUND UTILITIES SHOWN COMPRISE ALL SUCH UTILITIES IN THE AREA, EITHER IN SERVICE OR ABANDONED. THE ENGINEER FURTHER DOES NOT WARRANT THAT THE UNDERGROUND UTILITIES SHOWN ARE IN THE EXACT LOCATION INDICATED ALTHOUGH HE DOES CERTIFY THAT THEY ARE LOCATED AS ACCURATELY AS POSSIBLE FROM INFORMATION AVAILABLE. THE ENGINEER HAS NOT PHYSICALLY LOCATED THE UNDERGROUND UTILITIES.

SIDEWALK REMOVAL:

EXACT LOCATIONS OF CONCRETE SIDEWALK TO BE REMOVED WILL BE DETERMINED IN THE FILED BY THE ENGINEER.

SANITARY SEWER, STORM SEWER, AND WATER SERVICES:

THE LOCATION OF EXISTING SERVICES IS APPROXIMATE. FIELD VERIFY TO DETERMINE THE ACTUAL LOCATION DURING CONSTRUCTION. PAYMENT FOR FIELD LOCATING SERVICES IS INCLUDED IN RELATED ITEMS OF WORK.

COPYRIGHT © 2024 WOLVERINE ENGINEERS AND SURVEYORS, INC. ALL DRAWINGS AND WRITTEN MATERIALS ARE THE PROPERTY OF WOLVERINE ENGINEERS AND SURVEYORS, INC. AND THE SAME MAY NOT BE REPRODUCED, COPIED, OR DISCLOSED WITHOUT PRIOR WRITTEN CONSENT OF WOLVERINE ENGINEERS AND SURVEYORS, INC.

REVISION	DATE	DESCRIPTION

WOLVERINE
Engineers & Surveyors, Inc.
312 North Street
Mason, Michigan 48854
Ph: 317.676.9200
Fx: 317.676.9396
<http://www.wolveneg.com>

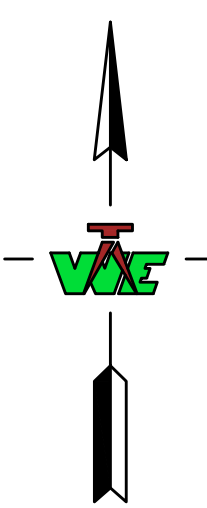
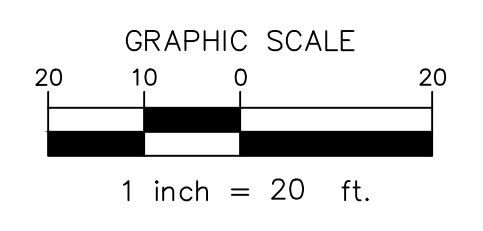
RIVER STREET SANITARY SEWER
CITY OF GRAND LODGE
EATON COUNTY, MICHIGAN

GENERAL NOTES & LEGENDS

PROJECT	
APPROVED	DBH
CHECKED	DBH
DRAWN	CJG
JOB NO.	23-0049
DATE	
SCALE	1" = 1'
SHEET NO.	C1.0

BID SET

BENCHMARKS:
 #1 GEAR SHAFT, EAST SIDE OF UTILITY POLE, S CORNER OF INTERSECTION OF HARRISON AND RIVER ST, ELEVATION= 814.24
 #2 NAIL AND TAG IN UTILITY POLE LACTED 15'-6" NORTH OF NORTHEAST CORNER OF NAIL AND HAIR COMMERCIAL BUSINESS ELEVATION = 810.39



REVISION	DATE	DESCRIPTION

WOLVERINE
 Engineers & Surveyors, Inc.
 312 North Street
 Mason, Michigan 48854
 Ph: 317.676.9200
 Fax: 317.676.9396
<http://www.wolveneg.com>

RIVER STREET SANITARY SEWER
 CITY OF GRAND LEDGE
 EATON COUNTY, MICHIGAN
 EXISTING TOPOGRAPHY

PROJECT TITLE

APPROVED: **DBH**

CHECKED: **DBH**

DRAWN: **CJG**

JOB NO.: **23-0049**

DATE: **12/11/2023**

SCALE: **1" = 20'**

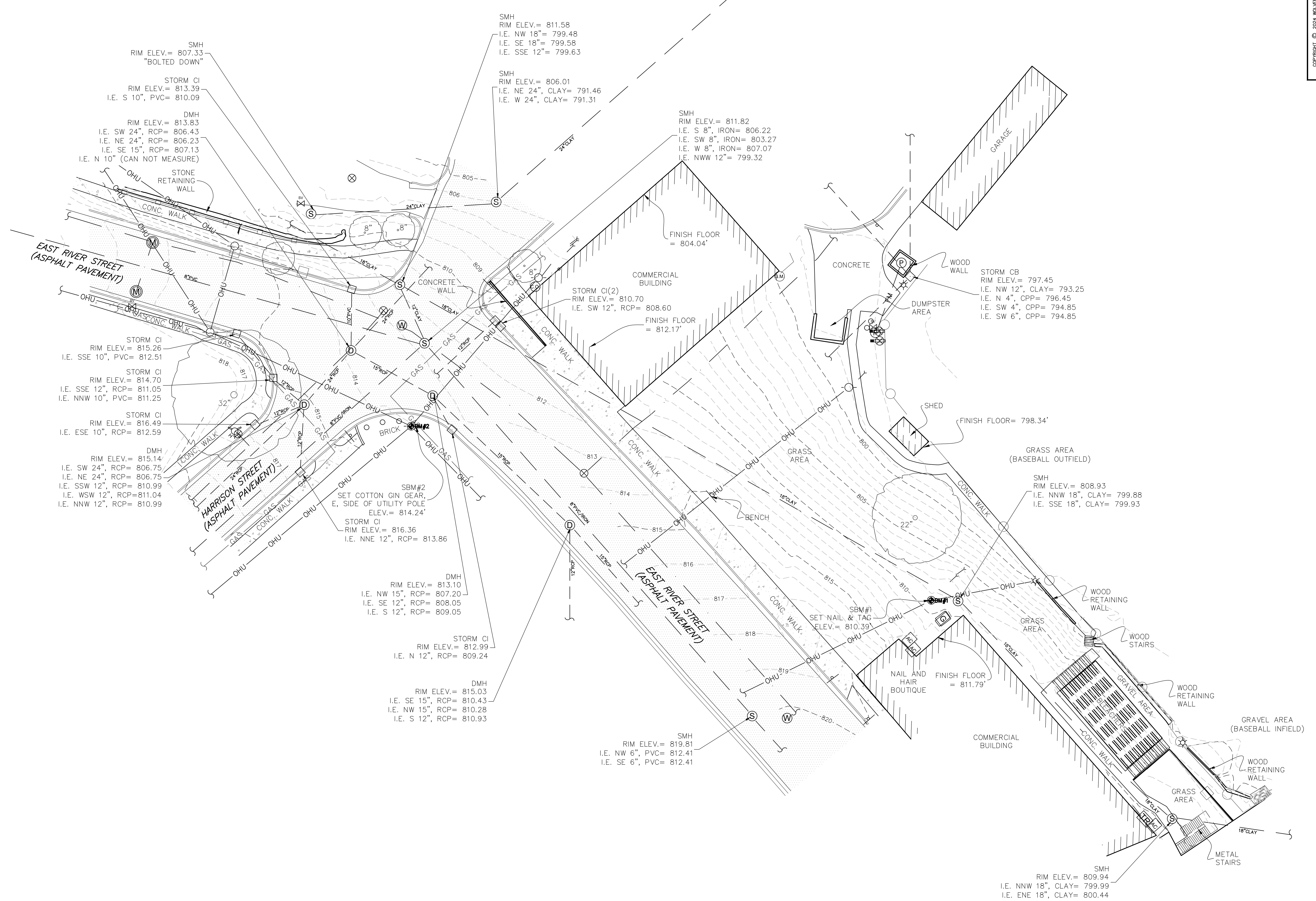
SHEET NO.: **C2.0**

S:\Projects\2023\23-0049 City Of Grand Ledge River St San Sewer_C2.0 Existing Topography.dwg, Monday, January 15, 2024, 3:59:44 PM, Cody Griffin



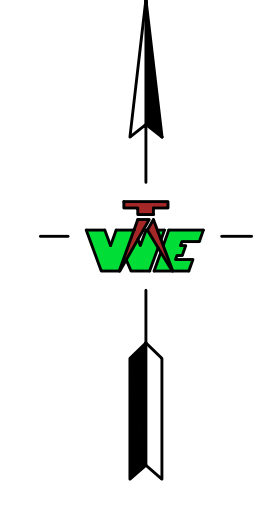
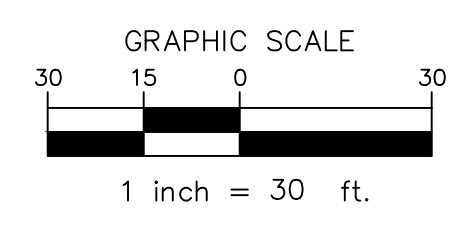
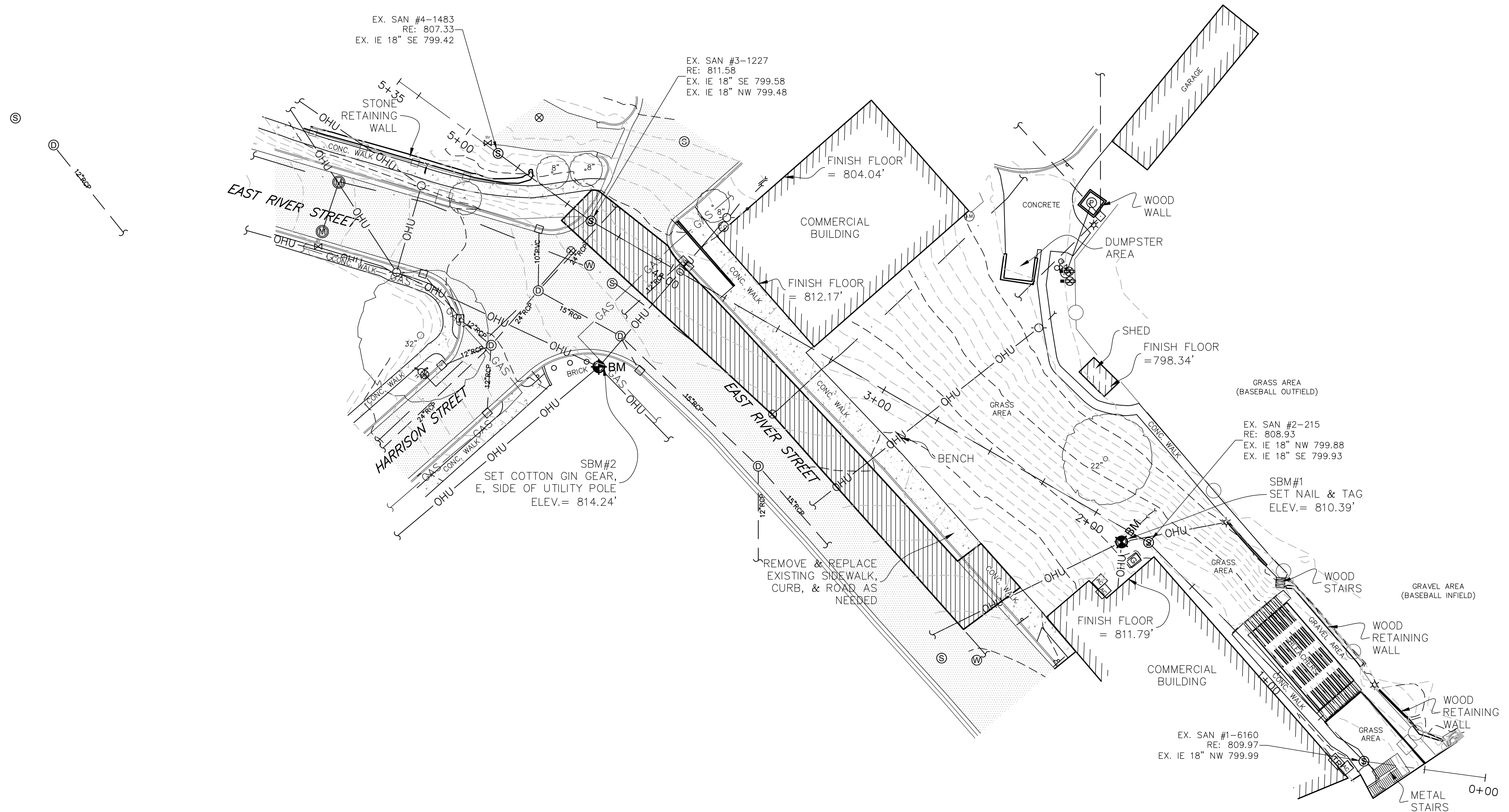
Know what's below.
 Call before you dig.

!!! CAUTION !!!
 THE LOCATIONS AND ELEVATIONS OF EXISTING UNDERGROUND UTILITIES AS SHOWN ON THIS DRAWING ARE ONLY APPROXIMATE. NO GUARANTEE IS EITHER EXPRESSED OR IMPLIED AS TO THE COMPLETENESS OR ACCURACY THEREOF. THE CONTRACTOR SHALL BE EXCLUSIVELY RESPONSIBLE FOR DETERMINING THE EXACT UTILITY LOCATIONS AND ELEVATIONS PRIOR TO THE START OF CONSTRUCTION. IT IS THE CONTRACTOR'S RESPONSIBILITY TO NOTIFY THE VARIOUS UTILITY OWNERS IN ACCORDANCE WITH MICHIGAN P.A. NO. 174 OF 2013.



BENCHMARKS:

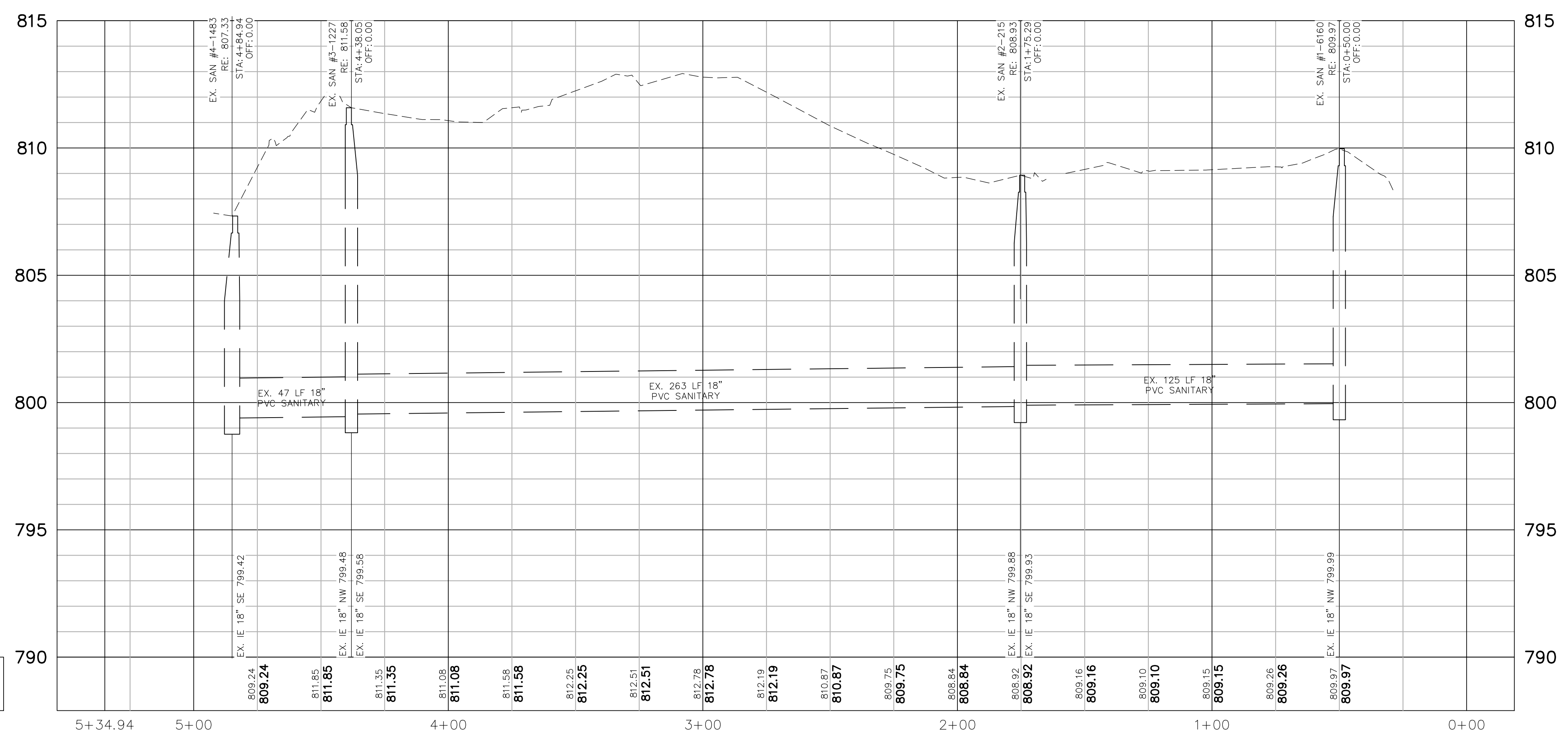
- #1 GEAR SHAFT, EAST SIDE OF UTILITY POLE, S CORNER OF INTERSECTION OF HARRISON AND RIVER ST, ELEVATION = 814.24
- #2 NAIL AND TAG IN UTILITY POLE LACTED 15'± NORTH OF NORTHEAST CORNER OF NAIL AND HAIR COMMERCIAL BUSINESS ELEVATION = 810.39



REVISION	DATE	DESCRIPTION

WOLVERINE
Engineers & Surveyors, Inc.

312 North Street
Mason, Michigan 48854
Ph: 317.676.9200
Fx: 317.676.9396
http://www.wolvenj.com



CENTERLINE GRADES
EXISTING PROP.

S:\Projects\2023\23-0049 City Of Grand Ledge River St San Sewer\C3D\Wos\C3.0 Sewer Plan & Profile.dwg, Monday, January 15, 2024 4:00:01 PM, Cody Griffin

BID SET

PROJECT: RIVER STREET SANITARY SEWER
CITY OF GRAND LEDGE
EATON COUNTY, MICHIGAN

APPROVED: DBH
CHECKED: DBH
DRAWN: CJG

JOB NO.: 23-0049
DATE: 12/11/2023
SCALE: 1" = 30'
SHEET NO.: C3.0

SHEET TITLE: EXISTING SEWER PLAN & PROFILE

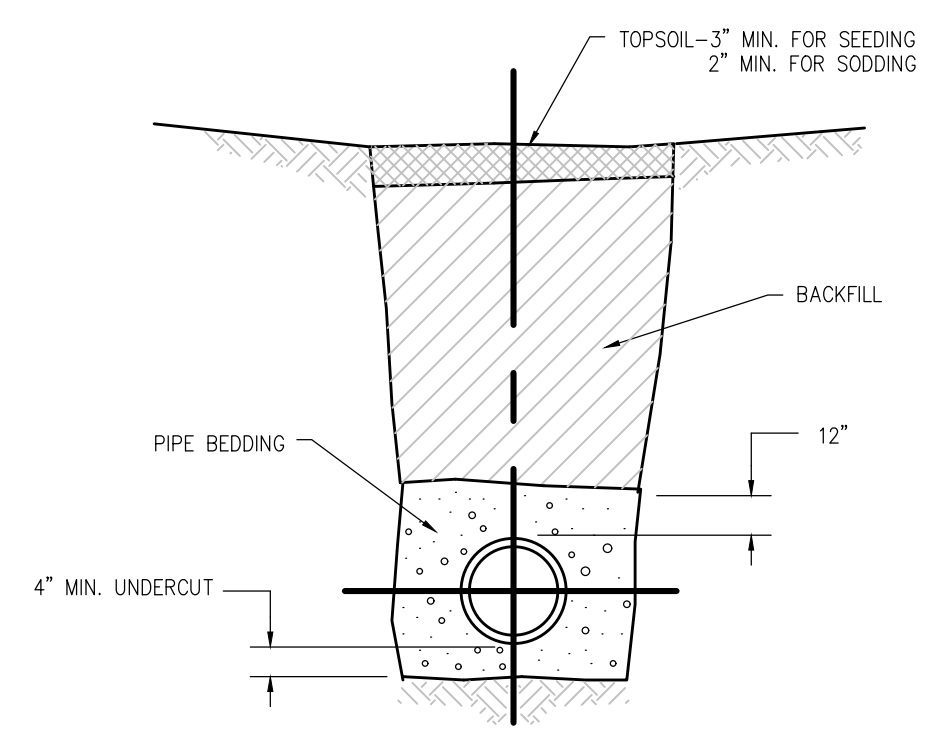
REVISION	DATE	DESCRIPTION

WOLVERINE
Engineers & Surveyors, Inc.
312 North Street
Mason, Michigan 48854
Ph: 317.676.9200
Fax: 317.676.9396
http://www.wolvenet.com

RIVER STREET SANITARY SEWER
CITY OF GRAND LEDGE
EATON COUNTY, MICHIGAN

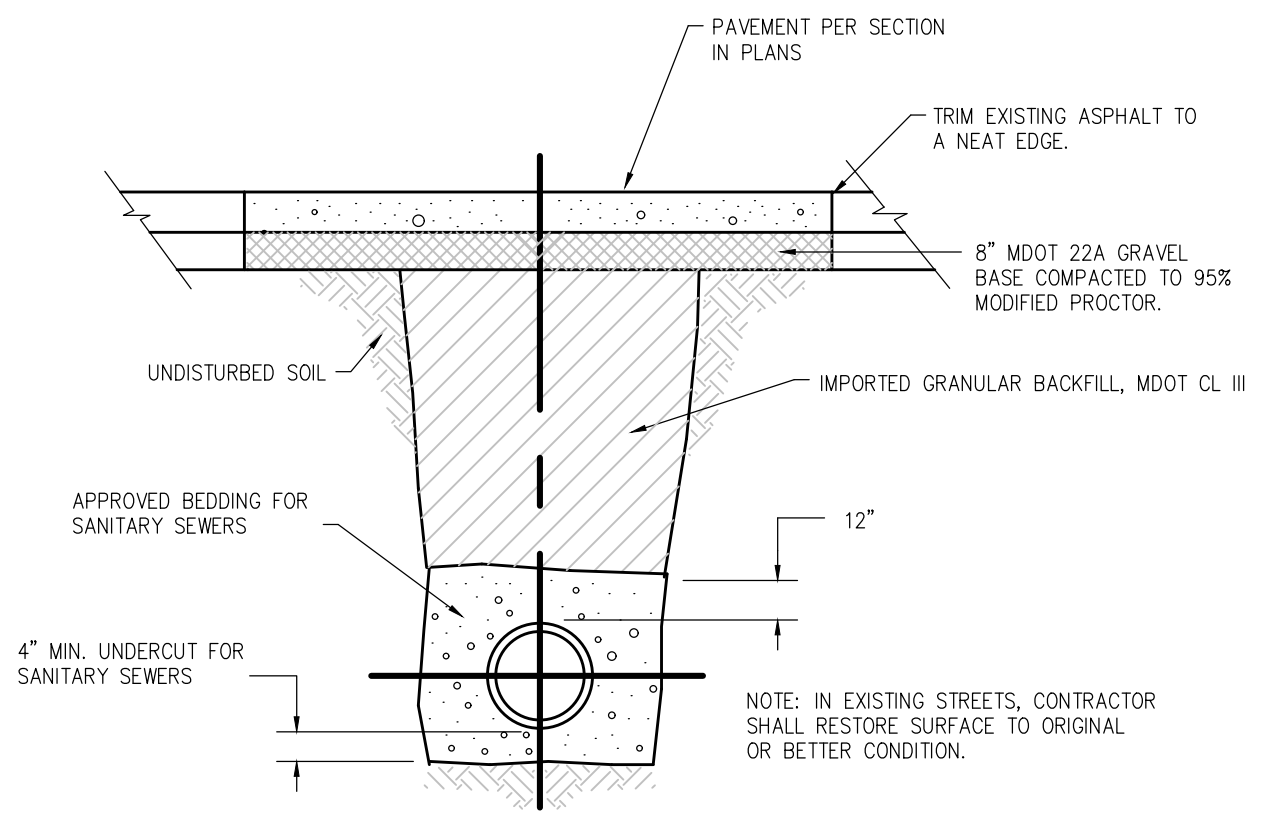
STANDARD DETAILS

PROJECT: RIVER STREET SANITARY SEWER
APPROVED: DBH
CHECKED: DBH
DRAWN: CJG
JOB NO.: 23-0049
DATE: NOT TO SCALE
SCALE: NOT TO SCALE
SHEET NO.: C5.0



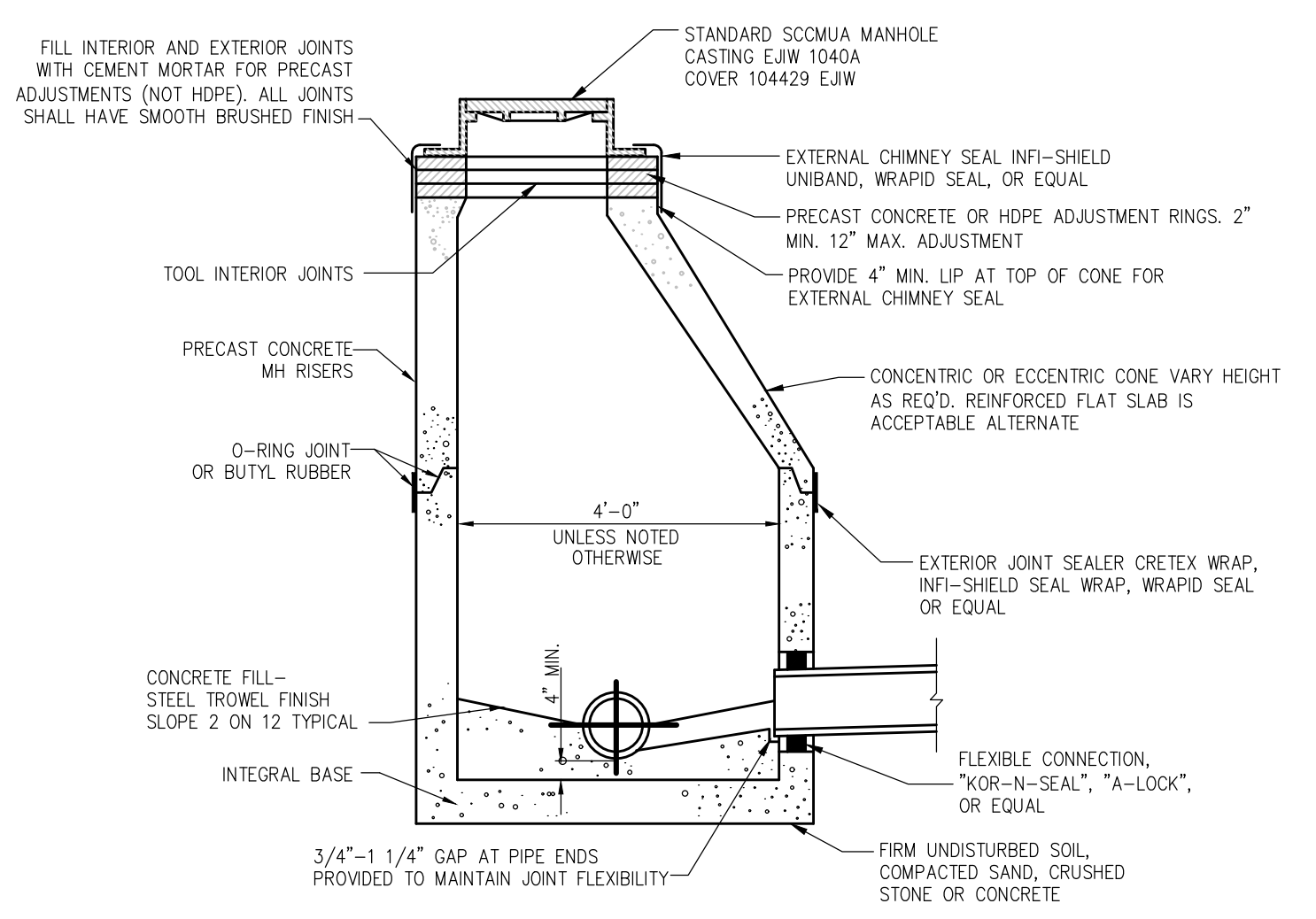
NORMAL TRENCH BACKFILL
NO SCALE

A-1



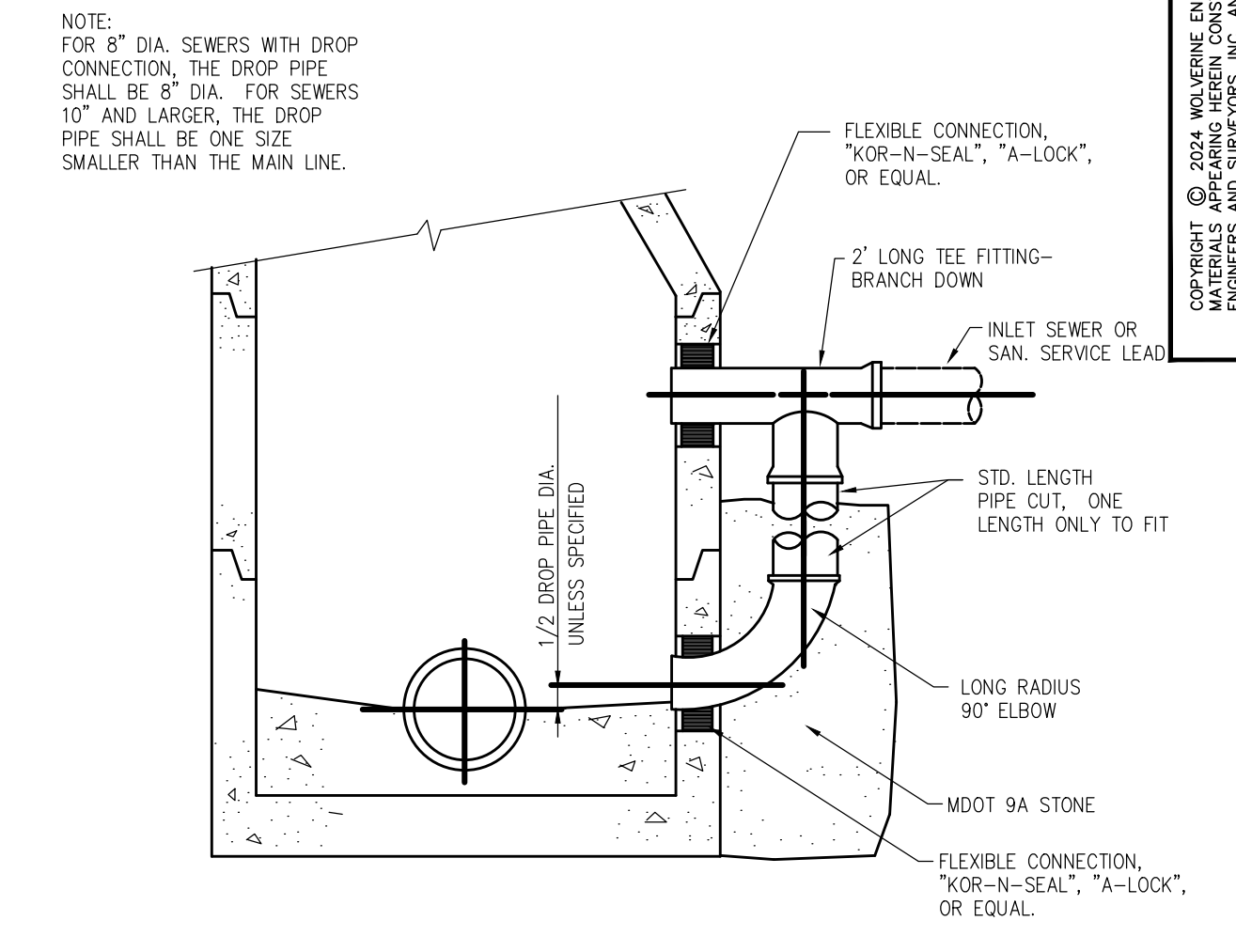
TRENCH BACKFILL UNDER ROADWAY
NO SCALE

A-2



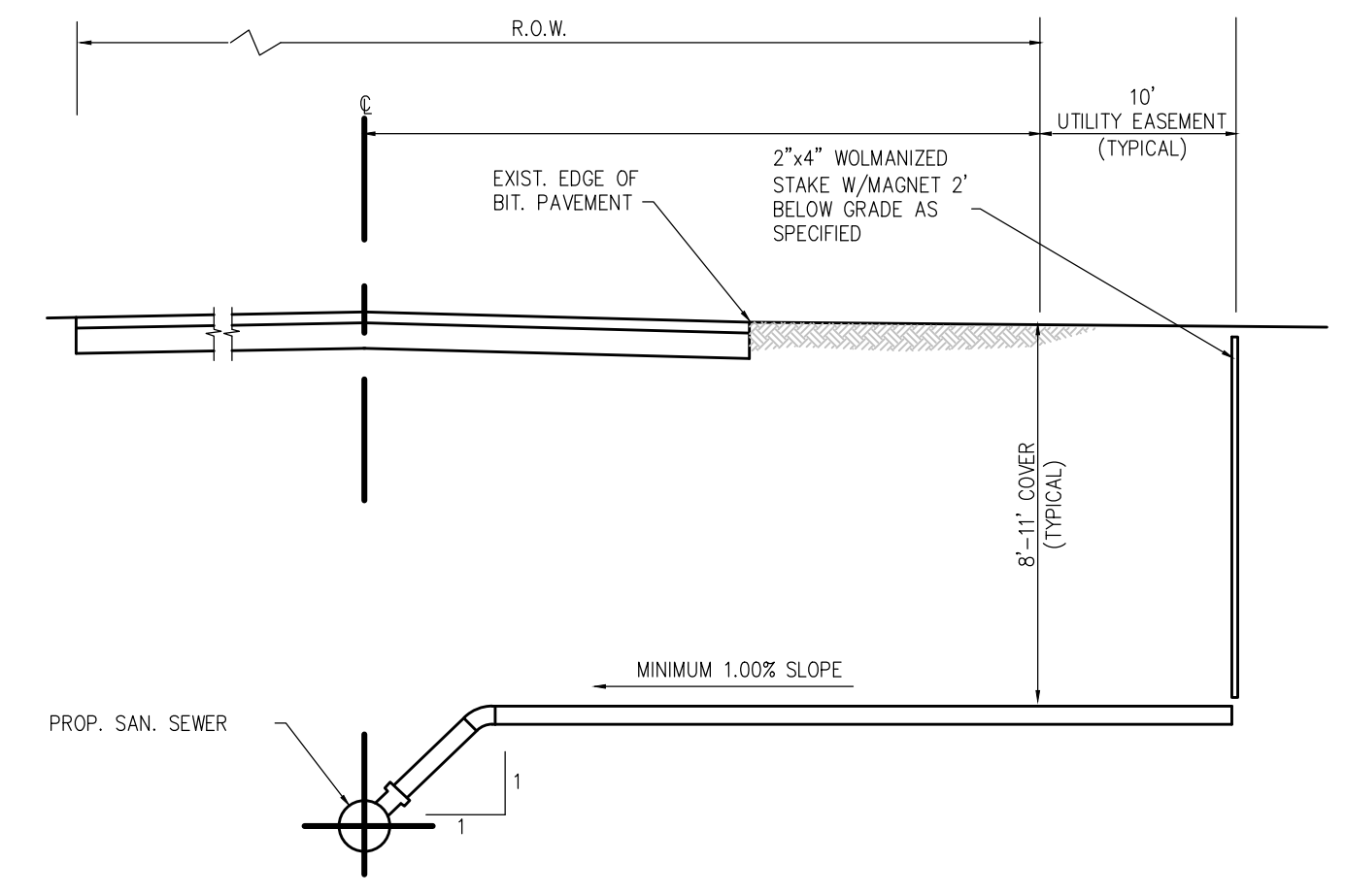
STANDARD SANITARY MANHOLE
NO SCALE

A-3



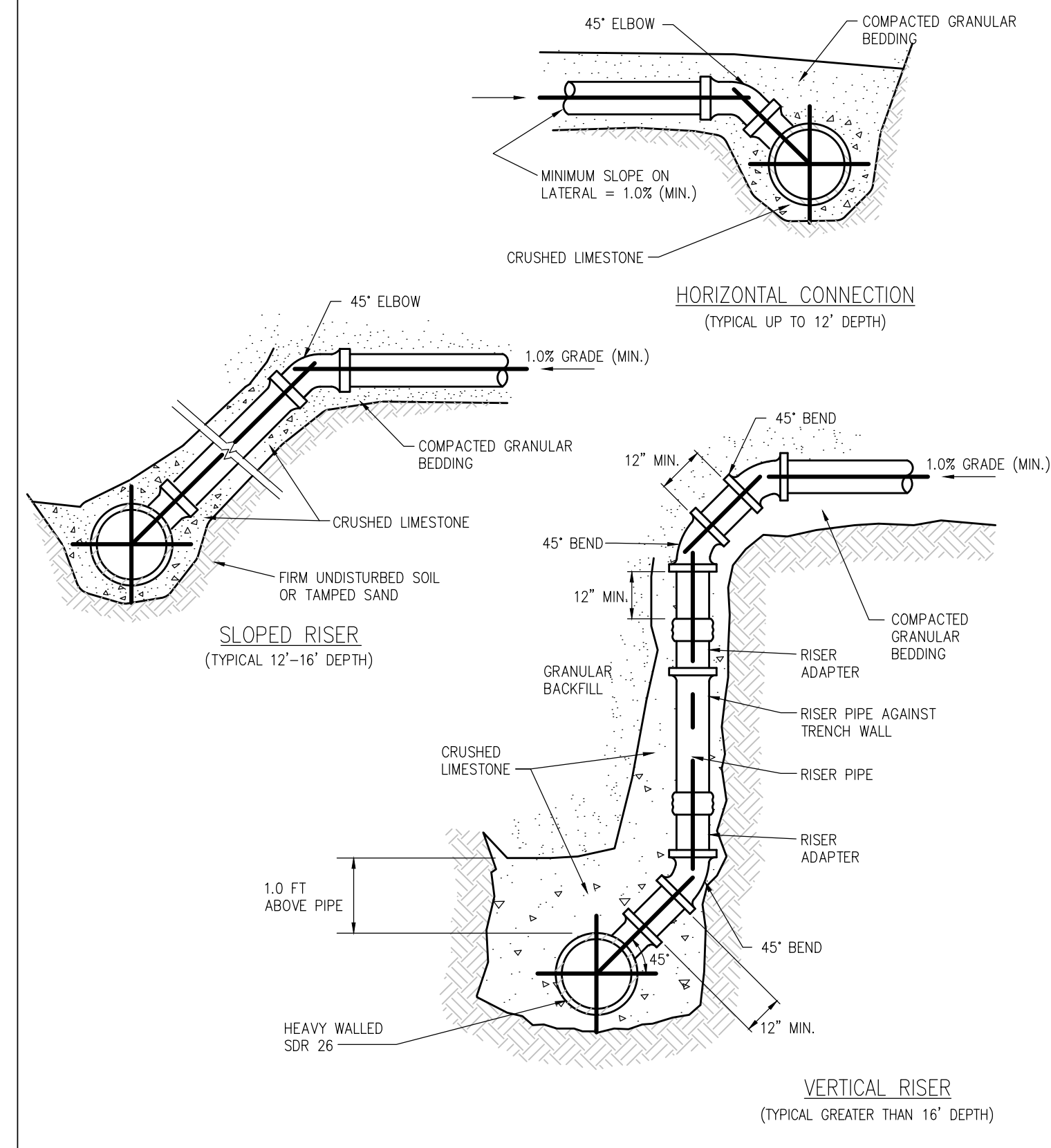
STANDARD DROP PIPE DETAIL
NO SCALE

A-4



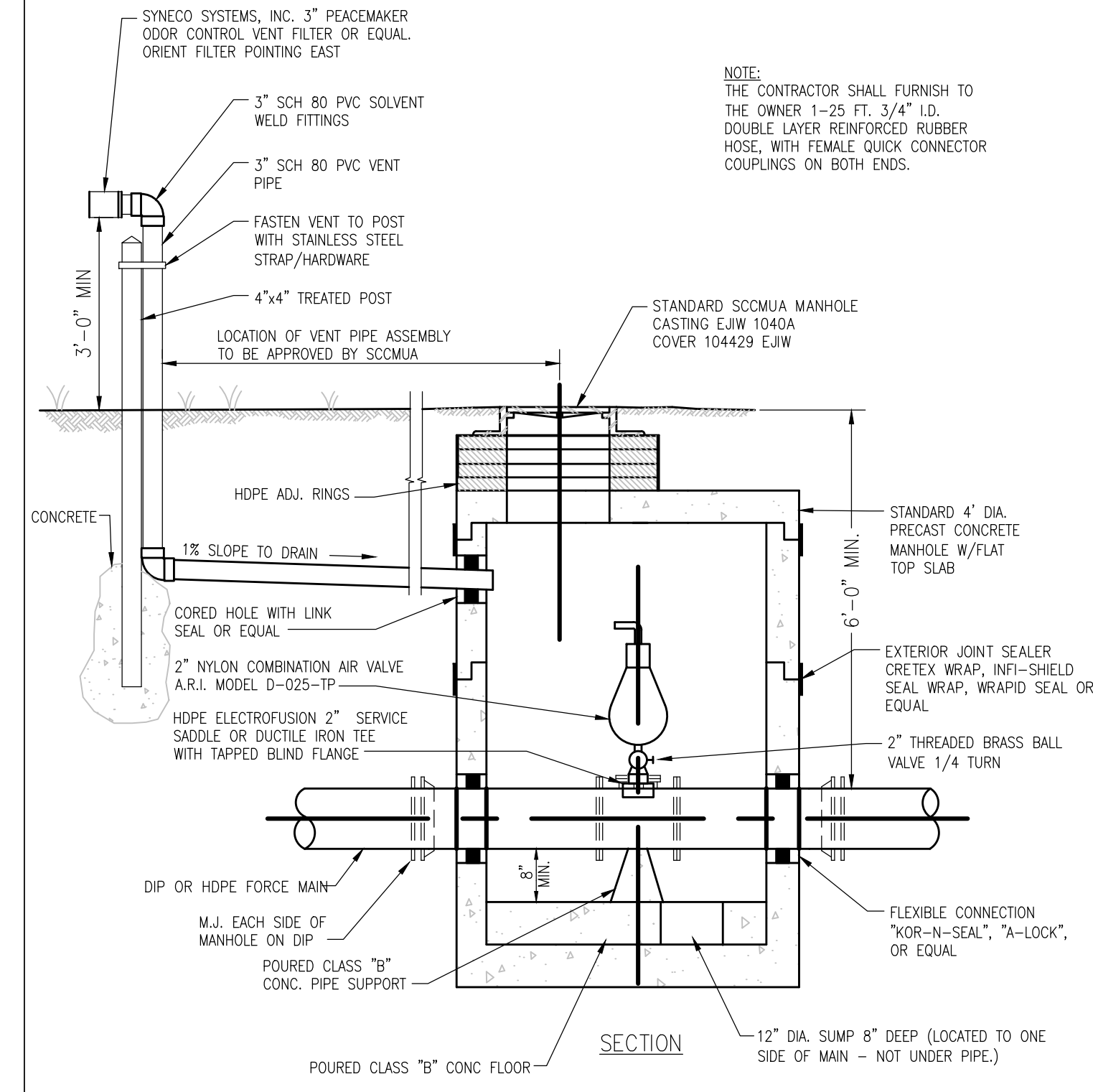
SERVICE LEAD DETAIL
NO SCALE

A-5



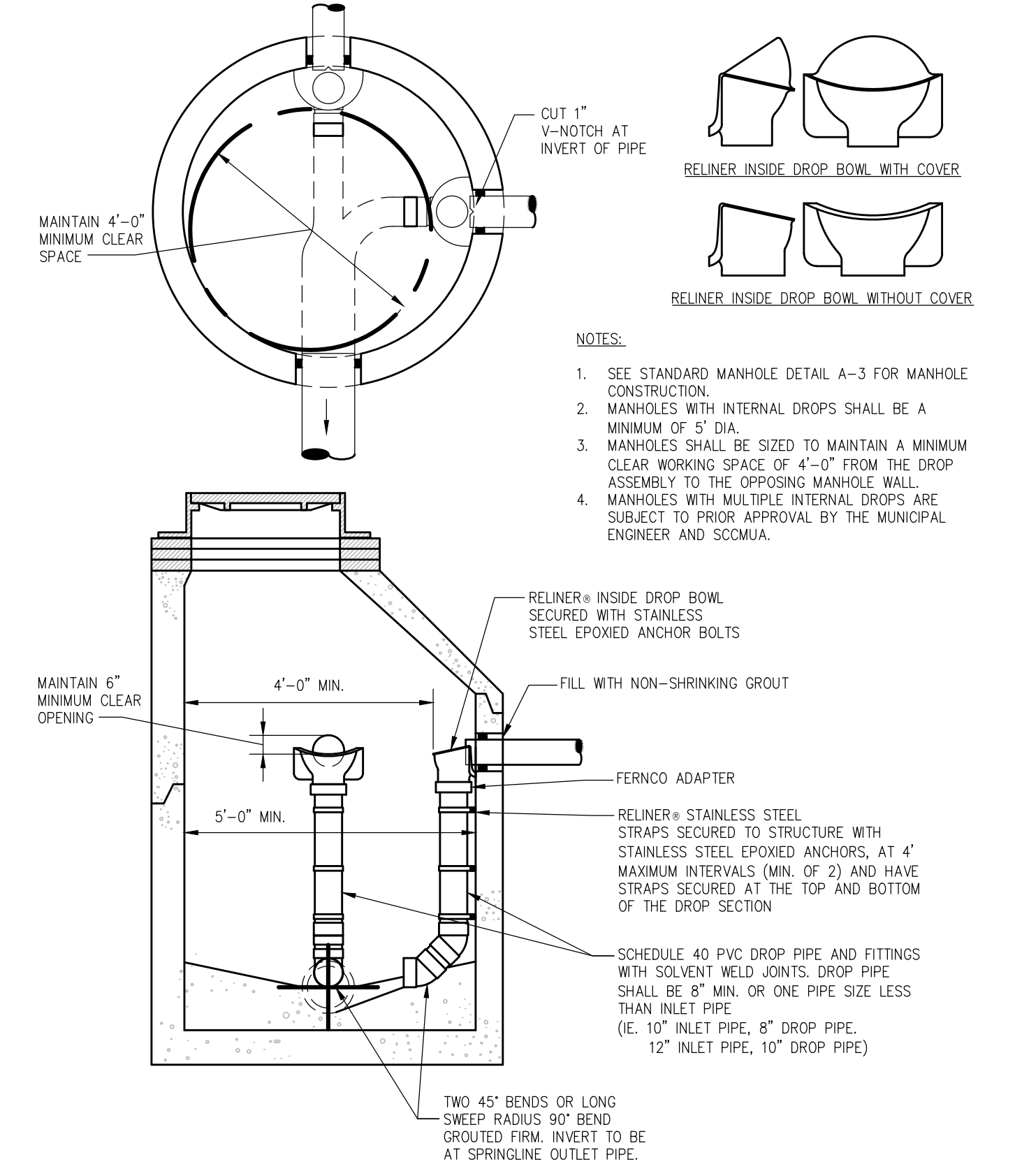
SANITARY SERVICE CONNECTIONS
(PVC PIPE ONLY)
NO SCALE

A-6



AIR/VACUUM RELEASE MANHOLE DETAIL
NO SCALE

A-7



STANDARD INTERNAL DROP MANHOLE
NO SCALE

A-8

- BENCHMARKS:**
- #1 GEAR SHAFT, EAST SIDE OF UTILITY POLE, S CORNER OF INTERSECTION OF HARRISON AND RIVER ST, ELEVATION= 814.24
 - #2 NAIL AND TAG IN UTILITY POLE LACTED 15'-6" NORTH OF NORTHEAST CORNER OF NAIL AND HAIR COMMERCIAL BUSINESS, ELEVATION = 810.39

SEQUENCE OF CONSTRUCTION

- WEEK 1: INSTALL SOIL EROSION CONTROL (SILT FENCE, CONST. DRIVE, ETC.)
- WEEK 1-2: SITE CLEARING, SITE DEMOLITION.
- WEEK 2-4: ROUGH GRADING.
- WEEK 4: INSTALL SEED AND MULCH
- WEEK 12: CLEAN-UP, REMOVE TEMP. SESC MEASURES.

ANTICIPATED START DATE: TBD
 ANTICIPATED COMPLETION DATE: TBD

THE SITE WILL BE PERMANENTLY STABILIZED WITHIN 5 DAYS OF FINAL GRADE OR FINAL ACTIVITY IN AN AREA. THE CONTRACTOR SHALL BE RESPONSIBLE FOR ALL TEMPORARY AND PERMANENT SESC MEASURES UNTIL THE SITE IS FULLY STABILIZED AND THE SESC PERMIT HAS BEEN CLOSED. THE OWNER WILL BE REQUIRED TO MAINTAIN PERMANENT MEASURES ONCE THE PROJECT IS COMPLETED AND STABILIZED.

THE SOIL EROSION CONTROLS WILL BE MAINTAINED WEEKLY AND AFTER EVERY STORM EVENT BY THE CONTRACTOR.

DEWATERING

DEWATERING IS NOT ANTICIPATED AT THIS TIME. IF DEWATERING IS REQUIRED TO COMPLETE THE CONSTRUCTION OF BUILDING STRUCTURES OR UTILITIES, A REVISED PLAN SHALL BE SUBMITTED TO CITY OF GRAND LEDGE DRAIN COMMISSIONER PRIOR TO PROCEEDING WITH ANY DEWATERING.

S-E-S-C KEYING SYSTEM

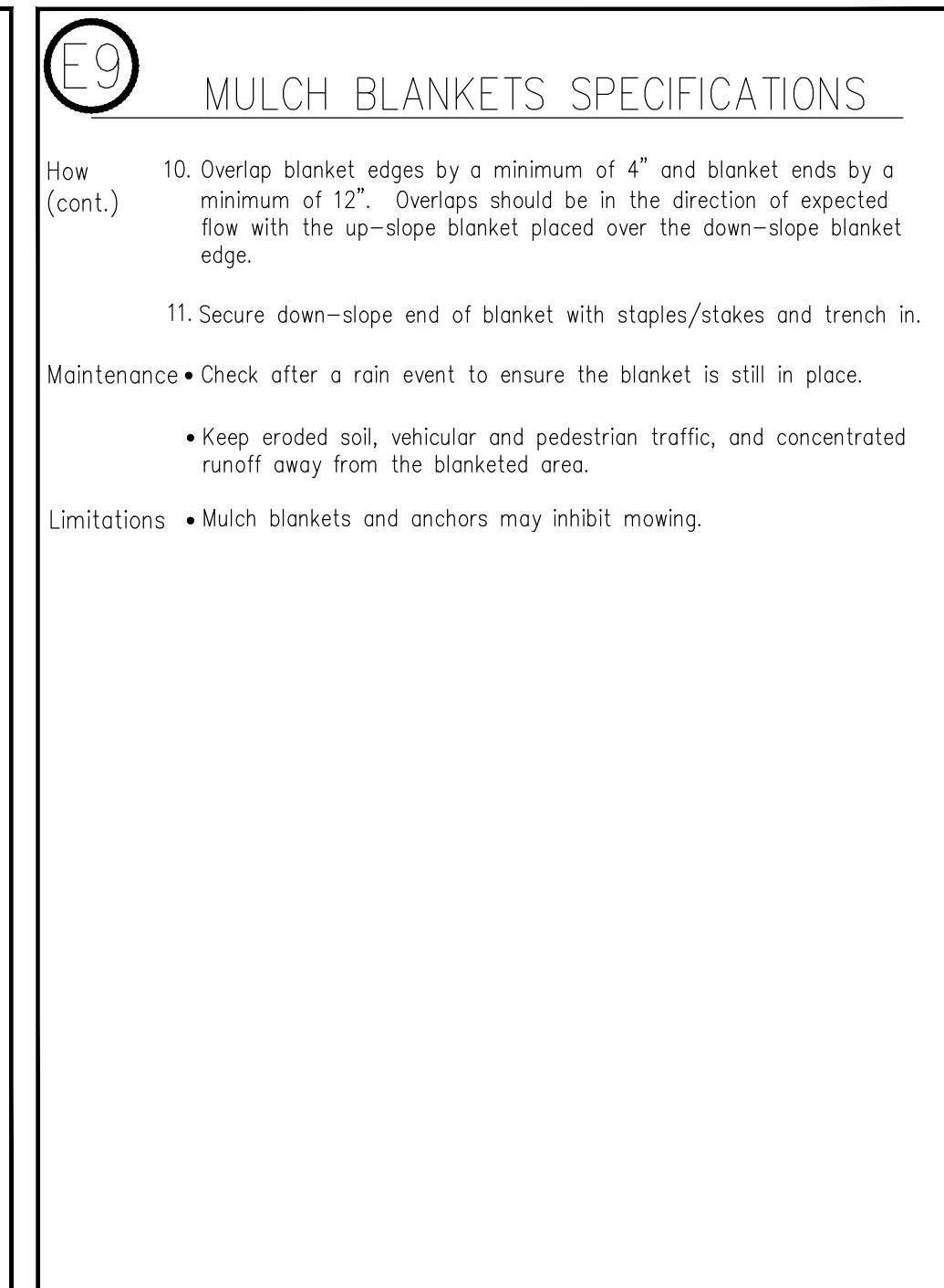
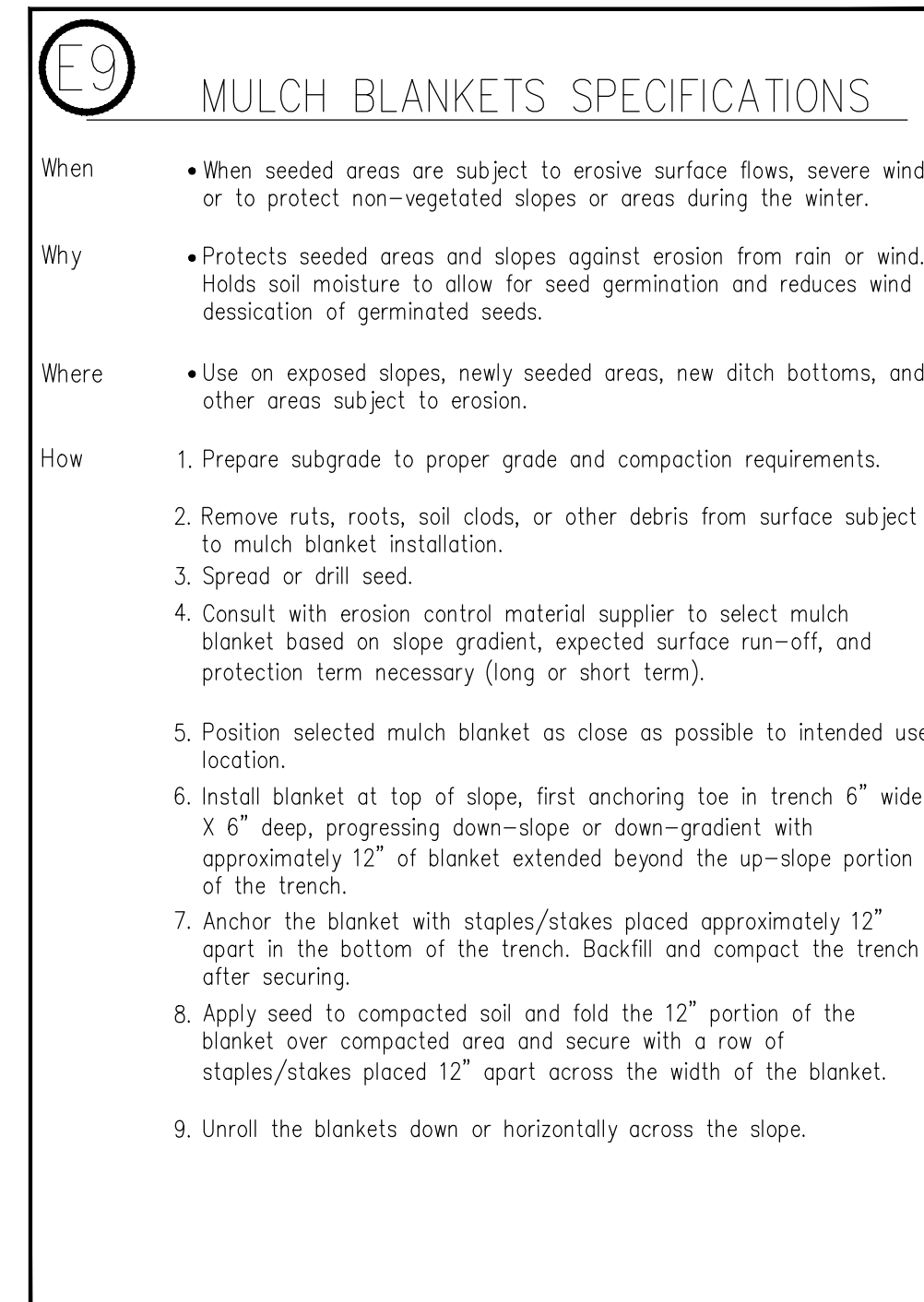
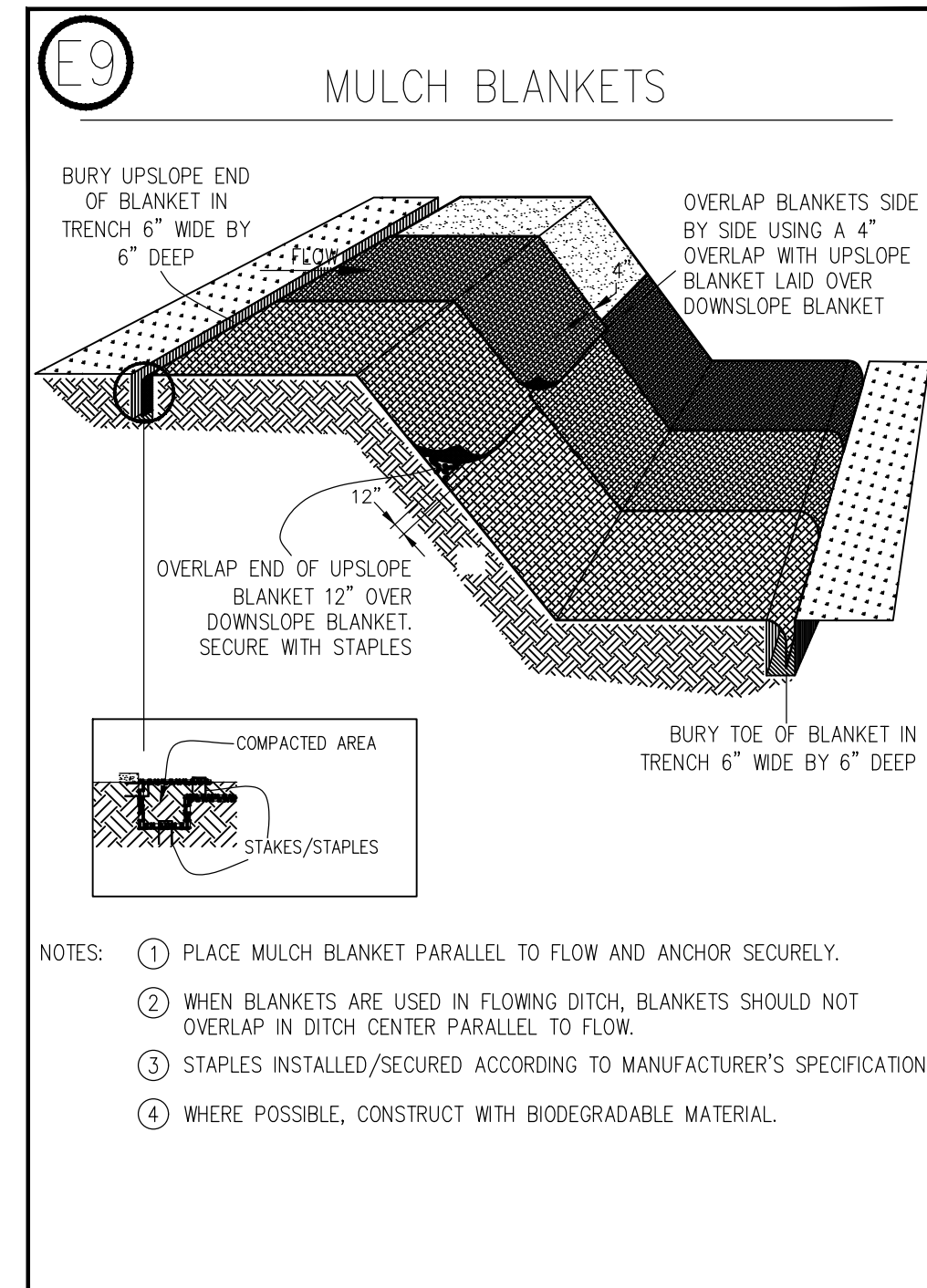
EROSION CONTROLS- KEY BEST MANAGEMENT PRACTICES

- E6 MULCH
- E7 TEMPORARY SEEDING
- E8 PERMANENT SEEDING

SEDIMENT CONTROLS- KEY BEST MANAGEMENT PRACTICES

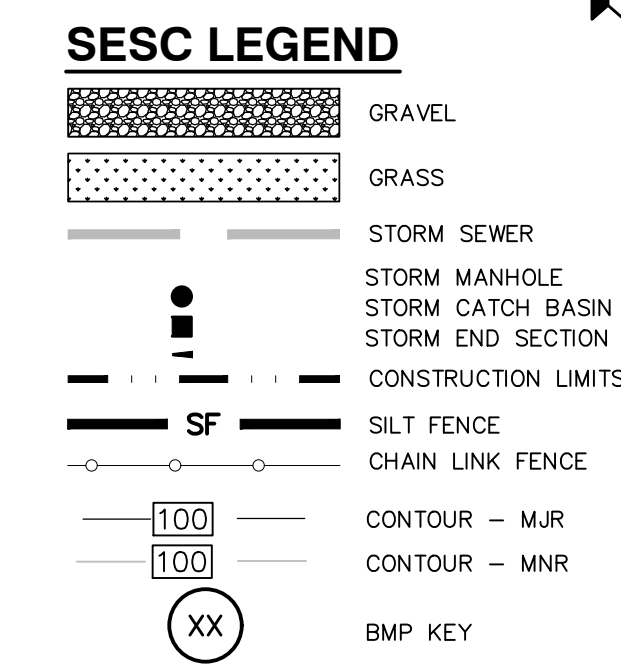
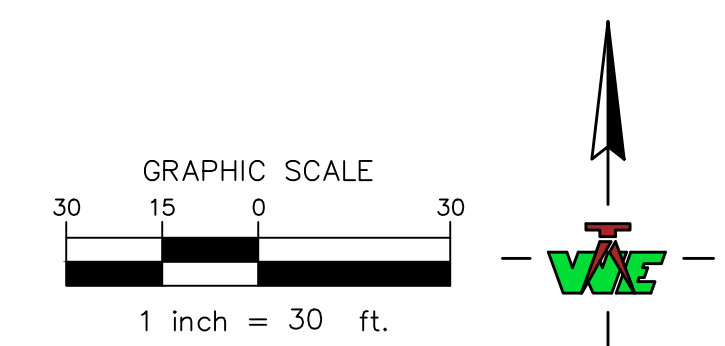
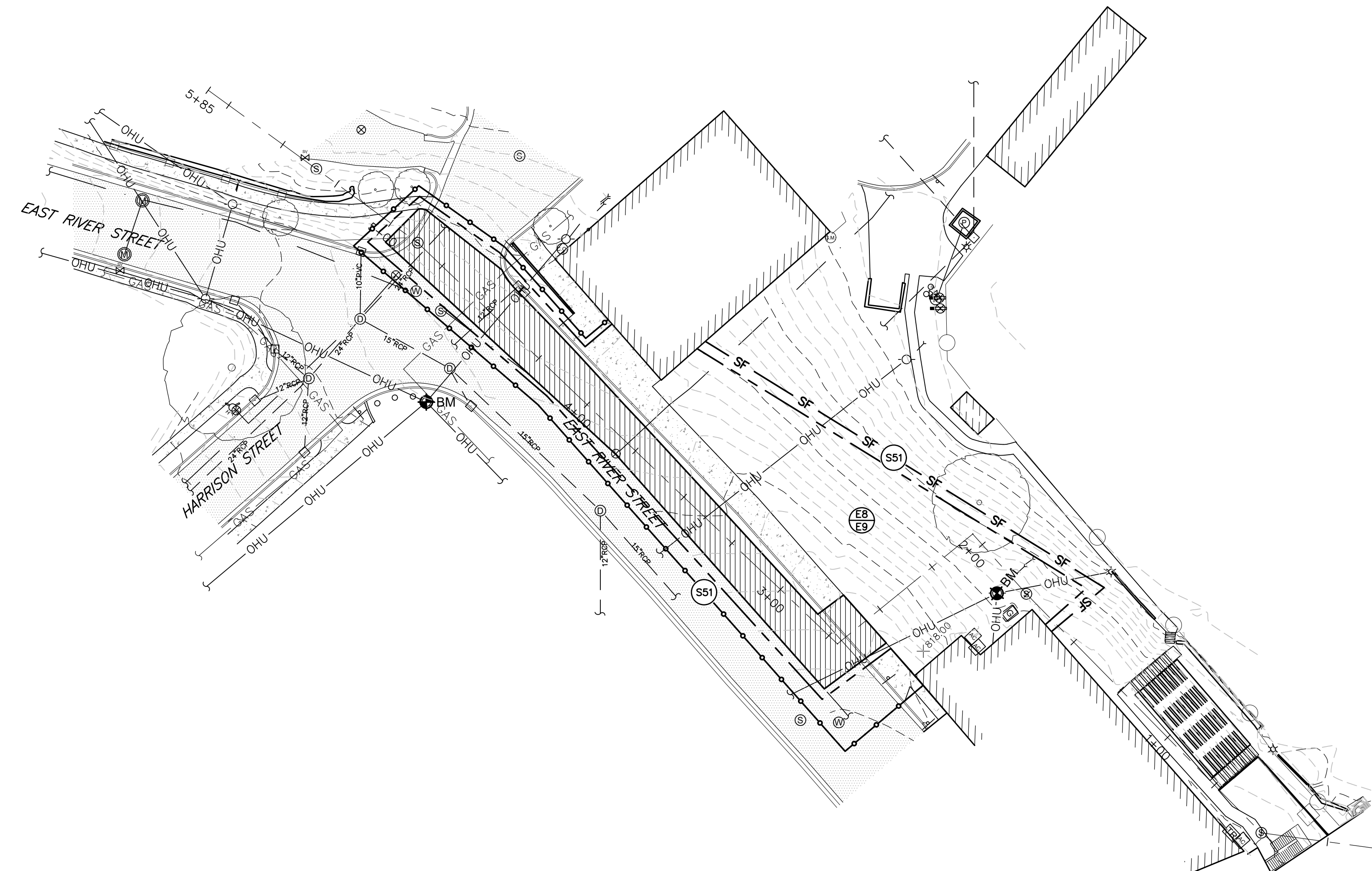
- SS1 SILT FENCE
- SS3 STABILIZED CONSTRUCTION ACCESS
- SS8 INLET PROTECTION FABRIC DROP
- SS9 INLET PROTECTION FABRIC FENCE

- ES31 CHECK DAM
- ES32 STONE FILTER BERM



SOIL EROSION NOTES:

1. THE SOIL EROSION PERMIT IS TO BE POSTED AT THE CONSTRUCTION ENTRANCE OF THE SITE UNTIL THE LAND IS PERMANENTLY STABILIZED AND THE PERMIT IS CLOSED BY THE DRAIN COMMISSIONER. FAILURE TO HAVE THE PERMIT POSTED COULD RESULT IN A CEASE AND DESIST ORDER. IT IS RECOMMENDED THAT THE PERMIT BE LAMINATED TO WITHSTAND THE WEATHER.
2. THE MAINTENANCE PROGRAM FOR ALL TEMPORARY AND PERMANENT SOIL EROSION CONTROL MEASURES, INCLUDING MAINTENANCE RESPONSIBILITIES, SHALL BECOME A PART OF ANY SALES OR EXCHANGE AGREEMENT FOR THE LAND ON WHICH PERMANENT SOIL EROSION CONTROL MEASURES ARE LOCATED.
3. THE CONTRACTOR SHALL BE RESPONSIBLE FOR ADHERING TO ALL THE REQUIREMENTS OF THE CLINTON COUNTY DRAIN COMMISSIONER'S SOIL EROSION PERMIT.
4. PRIOR TO START OF CONSTRUCTION, SUBMIT THE MOBILE PHONE NUMBER FOR THE ON-SITE CONTACT PERSON TO THE ATTENTION OF THE EATON COUNTY DRAIN OFFICE.
5. THE CONTRACTOR SHALL BE RESPONSIBLE FOR THE INSTALLATION OF ALL TEMPORARY SOIL EROSION CONTROL MEASURES PRIOR TO OR AT THE COMMENCEMENT OF CONSTRUCTION ACTIVITY. THE CONTRACTOR SHALL BE RESPONSIBLE FOR CHECKING ALL SOIL EROSION CONTROL MEASURES DAILY FOR EFFECTIVENESS AND FOR REPAIR, AS NEEDED. AN EATON COUNTY DRAIN OFFICE INSPECTOR IS TO VERIFY PROPER INSTALLATION OF THESE MEASURES PRIOR TO EARTH DISTURBANCE.
6. PERMITTEE MUST STRICTLY MAINTAIN DUST CONTROL AT ALL TIMES DURING CONSTRUCTION AND UNTIL THE SOIL EROSION PERMIT IS CLOSED BY THE EATON COUNTY DRAIN COMMISSIONER.
7. ANY CATCH BASIN LOCATED ON-SITE OR WITHIN 50 FEET OF THE CONSTRUCTION DISTURBANCE SHALL HAVE TEMPORARY INLET PROTECTION. FILTER BAGS SUCH AS A SILT SACK OR EQUIVALENT ARE EATON COUNTY DRAIN COMMISSIONER APPROVED METHODS FOR INLET PROTECTION.
8. ALL TEMPORARY SOIL EROSION CONTROL MEASURES WILL BE REMOVED WHEN THE DRAIN OFFICE CLOSES THE PERMIT.
9. DIRT TRACKED OFF SITE ONTO PUBLIC ROADS SHALL BE PROMPTLY REMOVED, NO LESS THAN ON A DAILY BASIS.
10. PERMANENTLY SEED AND MULCH ALL DISTURBED AREAS OUTSIDE OF PAVEMENT LIMITS.
11. SILT FENCE TO BE PLACED UNDER BRIDGE, ABOVE WATER'S EDGE, AND SHALL BE CONNECTED TO SILT FENCE AT TOP OF SLOPE ACCORDING TO SS1 SPECIFICATIONS ON SHEET 7.
12. DEWATERING IS NOT ANTICIPATED AT THIS TIME. IF DEWATERING IS REQUIRED TO COMPLETE THE CONSTRUCTION OF BUILDING STRUCTURES OR UTILITIES, A REVISED PLAN SHALL BE SUBMITTED TO THE EATON COUNTY DRAIN COMMISSIONER'S OFFICE PRIOR TO PROCEEDING WITH ANY DEWATERING.
13. ALL PERMANENT SESC MEASURES ARE TO BE MAINTAINED BY THE OWNER AFTER PROJECT COMPLETION.
14. ALL DISTURBED AREAS SHALL BE INSPECTED BY THE OWNER 12 MONTHS AFTER PROJECT COMPLETION AND RE-SEEDING IF NECESSARY.



MICHIGAN DEPARTMENT OF MANAGEMENT AND BUDGET S-E-S-C KEYING SYSTEM

- EROSION CONTROLS KEY BEST MANAGEMENT PRACTICES**
- E5 DUST CONTROL
 - E6 MULCH
 - E7 TEMPORARY SEEDING
 - E8 PERMANENT SEEDING
 - E9 MULCH BLANKET

- SEDIMENT CONTROLS KEY BEST MANAGEMENT PRACTICES**
- SS1 SILT FENCE
 - SS3 STABILIZED CONSTRUCTION ACCESS
 - SS8 INLET PROTECTION FABRIC DROP

NOVEMBER 1 - APRIL 1 DORMANT SEED WITH HAY MULCH AND TACKIFIER OR HEAVY STRAW BLANKET (PEGGED) SEED MIX A.	JULY 1 - AUGUST 1 SEED MIX A OR B, IRRIGATION REQUIRED
APRIL 1 - JULY 1 SEED MIX A OR B	AUGUST 1 - NOVEMBER 1 SEED MIX A
DATES ARE DEPENDENT ON TEMPERATURE AND PRECIPITATION. WHEN IN DOUBT, CONTACT THE CITY ENGINEER'S OFFICE. GRASS SEED SPECIFICATION = EARTHGRAPET SPARTAN GRADE 'A', MICHIGAN STATE SEED SOLUTIONS; 800 647-8873. CHECK WITH SUPPLIER FOR OTHER MIXTURES SUITABLE FOR THE LOCATION AND SOIL TYPES TO BE STABILIZED. CONTRACTOR TO USE MIX A UNLESS OTHERWISE INSTRUCTED BY ENGINEER.	
MIX A (SPARTAN GRADE 'A') 20% PERENNIAL RYEGRASS MIX 40% FESCUE MIX 40% BLUEGRASS MIX APPLY AT 5-6#/1000 SFT	MIX B 40% ANNUAL RYEGRASS 30% PERENNIAL RYEGRASS 30% SEED OATS APPLY AT 8#/1000 SFT
FOLLOW SOIL TEST RECOMMENDATIONS FOR FERTILIZER. IF NO SOIL TEST WAS DONE, APPLY 12-12-12 (NITROGEN-PHOSPHORUS-POTASSIUM) AT A RATE RECOMMENDED BY THE MANUFACTURER OR AT 10 #/1000 S.F.	

REVISION	DATE	DESCRIPTION
01	07/19/2024	SANITARY SEWER REVISIONS ADDING 35' OF SEWER

WOLVERINE
 Engineers & Surveyors, Inc.
 312 North Street
 Mason, Michigan 48854
 Ph: 317.676.9200
 Fax: 317.676.9396
 http://www.wolveneg.com

RIVER STREET SANITARY SEWER CITY OF GRAND LEDGE EATON COUNTY, MICHIGAN SESC PLAN

PROJECT TITLE

APPROVED: **DBH**

CHECKED: **DBH**

DRAWN: **CJG**

JOB NO.: **23-0049**

DATE: **12/11/2023**

SCALE: **1" = 30'**

SHEET NO.: **C6.0**



!!! CAUTION !!!
 THE LOCATIONS AND ELEVATIONS OF EXISTING UNDERGROUND UTILITIES AS SHOWN ON THIS DRAWING ARE ONLY APPROXIMATE. NO GUARANTEE IS EITHER EXPRESSED OR IMPLIED AS TO THE COMPLETENESS OR ACCURACY THEREOF. THE CONTRACTOR SHALL BE EXCLUSIVELY RESPONSIBLE FOR DETERMINING THE EXACT UTILITY LOCATIONS AND ELEVATIONS PRIOR TO THE START OF CONSTRUCTION. IT IS THE CONTRACTOR'S RESPONSIBILITY TO NOTIFY THE VARIOUS UTILITY OWNERS IN ACCORDANCE WITH MICHIGAN P.A. NO. 174 OF 2013.

BID PROPOSAL (REVISED)

Proposal of _____
(hereinafter called "Bidder")* a corporation, organized and existing under the laws of the State of _____
_____ a partnership, or an individual doing business as _____

To: CITY OF GRAND LEDGE
Eaton County, Michigan

Gentlemen:

The Bidder, in compliance with your Advertisement for Bids for the construction of the contract entitled, **RIVER STREET, SANITARY SEWER**, having examined the Drawings, Specifications, related documents, the site of the proposed work and being familiar with all of the conditions surrounding the construction of the proposed project including the soil and other site conditions, availability of materials and supplies, hereby propose to construct the project in accordance with the Contract Documents within the time set forth therein, and at the prices stated herein. These prices are to cover all expenses incurred in performing the work required under the Contract Documents, of which the Proposal is a part.

Bidder hereby agrees to commence work under this Contract on or before a date to be specified in written "Notice to Proceed" of the Owner and to fully complete the project in accordance with the schedule for completion as outlined in Information for Bidders. Bidder further agrees to pay as liquidated damages, the sum of \$500.00 each consecutive calendar day thereafter as hereinafter provided in the Information for Bidders.

Bidder acknowledges receipt of the following addendum:

*Insert corporation, partnership, or individual as applicable.

Bidder agrees to perform all the work described in the Contract Documents, for the following price(s):

ITEM	EST. QTY.	UNIT	DESCRIPTION	UNIT PRICE	TOTAL
City of Grand Ledge - River Street Sewer Relocation					
1	1	LSum	Temporary Bypass Pumping of Sanitary Sewer	\$	\$
2	1	Ea	Temporary Support of Power Pole	\$	\$
3	312	Lft	18" PS115 PVC Sanitary Sewer with Class "A" Backfill	\$	\$
4	3	Ea	Furnish and Install 4' Dia. Sanitary Manhole with Casting	\$	\$
5	1	Ea	Construct 8' Dia. Sanitary Manhole over existing 18" Sanitary Sewer	\$	\$
6	1	Ea	Connect Existing Force Main into new Manhole	\$	\$
7	300	Sft	Remove and Replace Existing 4" Concrete Walk	\$	\$
8	230	Lft	Remove and Replace Existing Concrete Curb and Gutter	\$	\$
9	4100	Sft	Existing HMA Pavement Removal	\$	\$
10	470	Syd	21AA Aggregate Base (8" CIP)	\$	\$
11	80	Ton	HMA, MDOT 13A Leveling Course @ 330#/syd	\$	\$
12	150	Lft	Flowable Fill existing 18" Sanitary Sewer	\$	\$
13	2	Ea	18" Sanitary Sewer Bulkhead	\$	\$
14	6	Hours	Exploratory Digging	\$	\$
15	1	LSum	SESC Measures	\$	\$
16	1	LSum	Traffic Regulator	\$	\$
17	1	LSum	Minor Traffic Control Devices	\$	\$
18	1	LSum	Project Cleanup and Site Restoration	\$	\$
TOTAL CONSTRUCTION AMOUNT					\$

Contractors Experience Modification Rate _____
Year EMR Was Issued _____

Furnishing of the EMR is required by the City of Grand Ledge. Failure to do so will be considered as an unresponsive bid and the bid will be rejected.

Bidders shall enter amounts for ALL Bid Items.

The Bidder agrees that the above total Amount of Base Bid, (corrected for any errors in extensions or additions) shall be the basis for determination of award of this contract along with all other requirements and consideration for award as provided under Basis of Award, Information for Bidders. Bidder further agrees that final contract price will be adjusted up or down to reflect actual units constructed, furnished or placed under this Contract. Engineer shall check extensions and addition of all items.

The above prices shall include all labor, materials, removal, overhead, profit, insurance, etc. to cover the finished work of the several kinds called for.

Bidder understands that the Owner reserves the right to reject any, or all bids, and to waive any informalities in the bidding.

The Bidder agrees that this bid shall be good and may not be withdrawn for a period of SIXTY (60) calendar days after the scheduled closing time for receiving bids.

Upon receipt of written notice of the acceptance of bid, bidder will execute the formal contract attached within ten (10) days. The bid security attached in the sum of

is to become the property of the Owner in the event the Contract and Bond are not executed within the time above set forth, as liquidated damages for the delay and additional expense to the Owner caused thereby.

IN WITNESS WHEREOF, the Contractor agrees to the foregoing terms this ____ day of _____, 20__.

By: _____

Title: _____

P.O. Address: _____

Zip Code

Telephone No: _____

LEGAL STATUS OF BIDDER

The bidder shall fill out the appropriate form and strike out the other two.

A corporation duly organized and doing business under the laws of the State of _____ for whom _____ bearing the official title of _____, whose signature is affixed to this proposal, is duly authorized to execute contracts.

A partnership, all of the members of which, with addresses, are:

An individual, whose signature is affixed to this proposal.